



宜蘭縣政府
Yilan County Government

2021

Yilan County United Nations
Sustainable Development Goals
Voluntary Local Review



2021

Yilan County

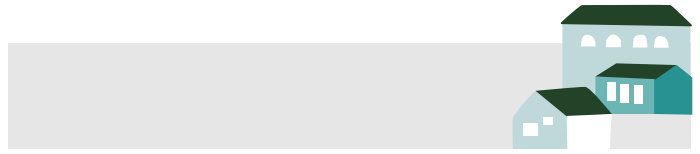
United Nations Sustainable Development Goals

Voluntary Local Review





TABLE OF CONTENTS



004 1) County Mayor's Foreword

2) Revision Rationale and Key Points

008

012 3) Mechanisms for Indicator Review, Revision, and Tracking





4) A New Way of Life Amid the Pandemic

016

5) Sustainable Development Goals and Results

022

126 6) Striding Towards the Future



1) County Mayor's Foreword



Sustainably Beautiful Yilan



Last year, the media reported that Yilan was the first of Taiwan's non-special municipalities to publish a United Nations Sustainable Development Goals (SDGs) Voluntary Local Review (VLR). We thank the media for their recognition, but we aren't looking to compete with anyone. We merely wish to honor the beautiful mountains and clean water and air in Yilan, the foundation of all our residents' lives. After holding the Yilan Green Expo, our flagship spring environmental education event with environmental sustainability as the core theme, we have continued to adopt the frameworks of the United Nations' SDGs and update environmental policies that have been planned and implemented by the county government, using internationally accepted indicators. In doing so, we examine which policies are in line with international standards and which need some tweaking. Those that are up to par can continue to forge ahead as is while those that are not as satisfactory can use some alterations and new goals in order to catch up.

This year, the county government continues its pursuit of attaining sustainable development by 2030, echoing the United Nations' Leave No One Behind commitment and voluntarily expanding our scope of inspection from seven ecological and biosphere-related indicators to a total of seventeen sustainable development indicators, including society and economic growth, for a comprehensive sustainability review. After all, we only have one earth, and one Yilan. The core content of the sustainability blueprint as drawn up by the county government is consistent with the United Nations' SDGs, with the hope that people, the environment, and other species can live together in harmony and prosperity.



1) County Mayor's Foreword



Sustainable development is not a simple task. With the rapid development of technology and the economy, people's lifestyles have also changed. This high demand for material consumption has produced large amounts of waste, leading to problems such as air and water pollution as well as excess energy consumption. A warming climate has led to frequent disasters around the globe; the impacts of extreme weather affect every one of us. Coupled with the serious threat of a pandemic to our lives and wellbeing, we deeply understand that environmental protection cannot be neglected in the pursuit of economic development. Humanity's destruction of the natural environment will eventually come back to harm humanity itself. Only by implementing sustainability across all aspects of society can we solve the dilemma of how to help both humanity and nature coexist successfully.

In Yilan we take pride in being an environmentally-friendly county. This year, we are once again combining the UN's SDGs with our county blueprint, with "Welfare, Economic Development, and Environmental Sustainability" as our foundation. Through continuous self-review and hard work, we hope to maintain the beauty of this land so that future generations can live happy, healthy lives and carry on the memories and stories of Yilan.



Yilan County Mayor



Photo by Kenji Lai



2

Revision Rationale and Key Points

2) Revision Rationale and Key Points



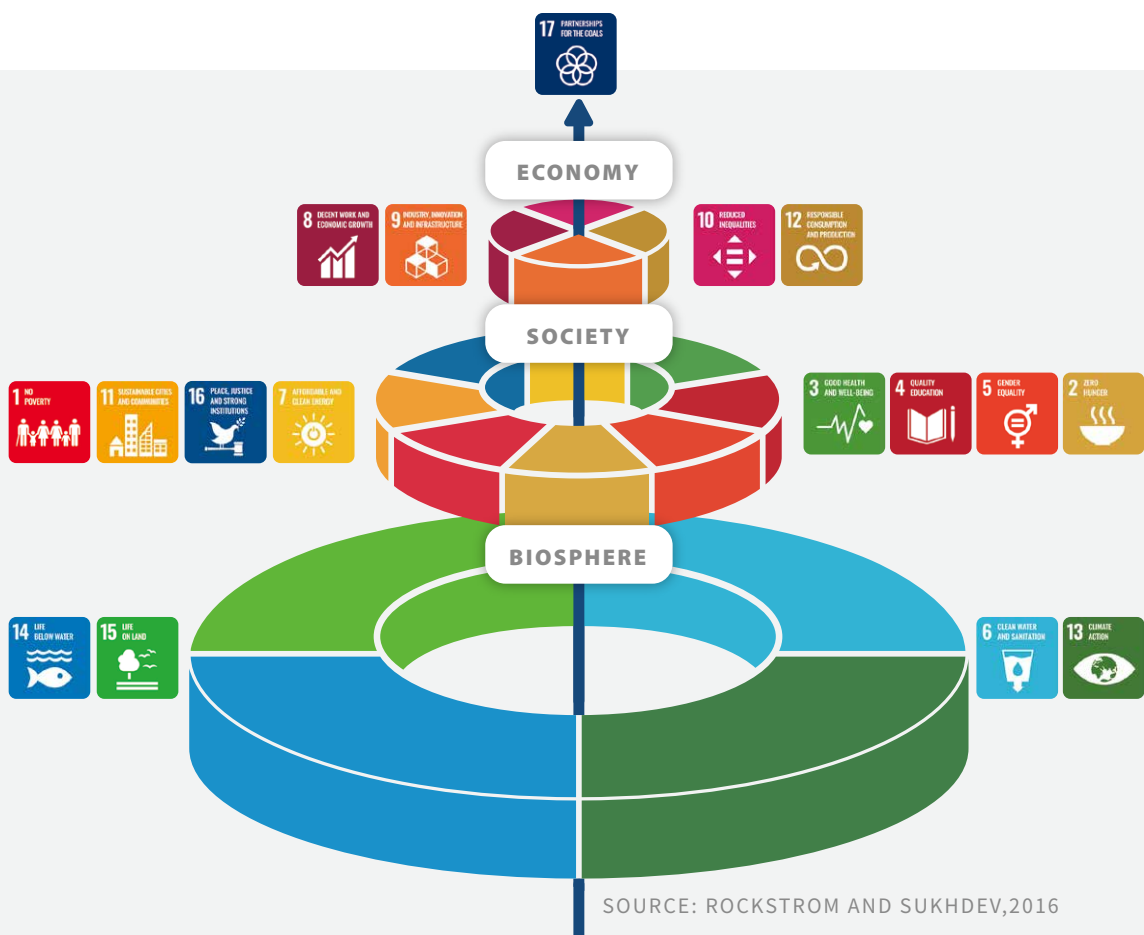
- ▶ In 2020, with the understanding that healthy lifestyles must be built upon the foundation of a sustainable environment, Yilan County chose four goals related to environmental protection: terrestrial ecology, sustainable oceans and conservation, water purification and sanitation, and climate action. In addition to the related concepts of sustainable energy, sustainable cities and communities, and global partnerships that take advantage of Yilan's unique characteristics, these goals took priority in the 2020 Yilan County SDG VLR with the hope that social progress and economic development will not leave environmental sustainability behind.
- ▶ The 2021 Yilan County VLR echoes the UN's Leave No One Behind commitment, voluntarily expanding the scope of review and introducing the three main topics of social welfare, economic development, and environmental sustainability. The original seven environmentally-oriented "biosphere" indicators have been expanded to a total of 17 SDGs covering society and the economy. These indicators have been collected as a blueprint for sustainable administration with the goal of leaving Yilan with a brighter future.

2) Revision Rationale and Key Points



KEY POINTS OF THIS REVISION

- ▶ In response to the pandemic, updates to the various SDGs are proposed.
- ▶ The scope of the 2020 VLR goals is extended from the local environment to humanistic care with 10 new goals to correlate with the UN's SDGs.
- ▶ The corresponding actions listed under the SDG indicators are presented with indicators as tracking mechanisms.



The 7 prioritized goals in the 2020 Yilan County SDGs VLR compose the bottom "Biosphere" layer of the chart. In 2021, in response to the pandemic, it is important to also focus on "Society," where humanity is united and connected to each other, to achieve a prosperous "Economy." Therefore, 10 new targets have been added this year to help Yilan move towards the positive cycle of global sustainable development.



Photo by Kenji Lai



3

Mechanisms for Indicator Review,
Revision, and Tracking



3) Mechanisms for Indicator Review, Revision, and Tracking

Mechanisms for Promoting Sustainable Development



In order to promote sustainable development, the government formulated the "Guidelines for Yilan County Government Sustainable Development Goals Promotion Group" on August 30th, 2021 and set up the "Sustainable Development Goals Promotion Group" thereafter.

The group consists of one Chairperson, concurrently held by the County Mayor; two Vice Chairpersons, concurrently held by the Deputy County Mayor and the Secretary-general; and one Executive Secretary, concurrently held by the Director of the Department of Planning. The remaining members are made up of chiefs of various governmental agencies and the directors of the first-level agencies they work for.

The group is tasked with the following:

- ▶ Implement and formulate plans related to sustainable development.
- ▶ Revise and compile Yilan County VLR.
- ▶ Coordinate and confirm internal divisions of labor to implement Taiwan's sustainable development goals.
- ▶ Follow up with the progress and results of the government's internal implementation of Taiwan's sustainable development goals.
- ▶ Follow the development committees' guidelines on sustainable development implementation.



Meeting of Yilan County Government SDG Promotion Group, 2021

3) Mechanisms for Indicator Review, Revision, and Tracking



Indicator Review and Implementation Process

In order to set concrete indicators to track the implementation of the county's sustainable development project, the government chose certain markers corresponding to the 17 goals and selected these markers as indicators to examine the rationality, feasibility, and predictability of the project, with 2020 as the base year and 2030 as the target year.

▶ INTERNAL TRAINING

The consulting team conducts internal VLR training courses across all bureaus and departments of the county government, explaining the principles of writing VLRs and the promotion steps and implementation processes while providing suggestions on how to keep improving county VLRs.

▶ POLICY INVENTORY

Each bureau takes inventory of policies and plans, proposing ones corresponding with specific SDG objectives while clarifying implementation status and setting indicators.

▶ REVIEW MEETINGS

The Planning Department invited the deputy directors of each bureau to break into four groups to re-examine the policies, set clear indicators based on historical data, and quantify 2030 targets in detail.

▶ DATA INDICATOR CONFIRMATION

Chaired by the Secretary-general, directors of each bureau participated in a meeting to examine the relevance of the indicators and corresponding actions for each goal item by item. Proposals to add or revise the content were also raised.

▶ SUSTAINABILITY GROUP MEETING

The county mayor invited members of the SDG Promotion Group to discuss relevant sustainable development goals, attain internal consensus, and finalize the content of VLRs.

▶ REPORT COMPILATION

Content from various bureaus consolidated and compiled in the 2021 Yilan County VLR, also converted into an e-book.

▶ FORUM AND DISCLOSURE

A forum was held to announce Yilan's sustainability policies, with experts and scholars serving as speakers to convey the importance of sustainability for Yilan and to publicly disclose the 2021 Yilan County SDGs VLR.



Photo by Kenji Lai



4

A New Way of Life
Amid the Pandemic



4) A New Way of Life Amid the Pandemic



In 2020, COVID-19 rapidly spread around the world, endangering the health and way of life of people across the globe. Along with these issues came major economic and social problems. Many countries have faced a sharp increase in poverty, severe food shortages, rising unemployment rates, and insufficient medical care, all a reflection of the resource inequality between countries.

Due to the sudden nature of the pandemic, implementation of the United Nations' Sustainable Development Goals (SDGs) has been hindered to a certain extent. Thus, the current imbalance in social and economic systems will cause less affluent countries to fall deeper into poverty. If the international community only focuses on pandemic-prevention measures for themselves and not one another, then sustainable development will be forever out of reach.

During this pandemic, Taiwan has remained stable relative to most countries around the world. In the early stages of the pandemic, due to advanced deployment of medical supplies when masks and medical resources were still available, Taiwan was able to make donations and support the international community. However, the impacts of the pandemic must not be underestimated. In addition to following the pandemic guidelines issued by the central government, county and city governments also uphold the authority and responsibility to take appropriate pandemic prevention measures. Under the idea that "epidemic prevention is like war," Yilan County mobilized all bureaus of the county government to work together to implement comprehensive pandemic prevention measures. Also, the bureaus evaluated the impact of the pandemic on county residents and proposed relevant pandemic prevention measures in response to the potential impact of the various SDGs.

The county measures are listed below. We hope that no matter the circumstances, we are prepared to reduce the impact that the pandemic has had on society, economy, and way of life, so county residents can live through the pandemic with peace of mind.

4) A New Way of Life Amid the Pandemic



SDGs and Related Impacts	Corresponding County Pandemic Measures
<p>SDG2</p> <p>Zero hunger</p> <ul style="list-style-type: none"> ▶ Number of food-insecure people increasing ▶ Food supply chain affected 	<ul style="list-style-type: none"> ▶ Meal vouchers are extended for disadvantaged students from families experiencing difficulties ▶ Community meals for the elderly and lunches for students are changed to self-pick-up or delivery
<p>SDG3</p> <p>Good health and well-being</p> <ul style="list-style-type: none"> ▶ Threats to people's health ▶ Insufficient vaccine coverage 	<ul style="list-style-type: none"> ▶ "Specialized Laboratory for Severe and Special Infection Pneumonia" added to National Yang-Ming University Hospital ▶ Medical service teams to provide services in aboriginal villages, main harbors, and military bases for on-site COVID-19 testing ▶ County government launched the "At-Home Pandemic Relief Pack" for locals in quarantine ▶ Founded the "Yilan County Pandemic Prevention Taxi Unit" and provide free transport service for pregnant women ▶ Set up vaccination centers in the north and south of Lanyan River as well as mobile vaccination sub-stations in hospitals, clinics, and health centers to increase vaccination rates ▶ Issue vaccination notices, alter buses to pick up elderly with disabilities and mobility difficulties, and increase the vaccination rate for those over 65 years of age
<p>SDG4</p> <p>Quality education</p> <ul style="list-style-type: none"> ▶ Classes cancelled ▶ Digital divide in distance learning 	<ul style="list-style-type: none"> ▶ "Fun e-Academy "digital learning platform and attached "Self-Study Service During Pandemic Prevention Period" ▶ Provide equipment for disadvantaged students to engage in remote learning at home, preparing 5,000 mobile devices and 2,000 phone numbers to achieve the goal of uninterrupted learning ▶ "Fun Reading in Summer" project to provide free delivery of children's books to preschool and primary school students

4) A New Way of Life Amid the Pandemic



SDGs and Related Impacts	Corresponding County Pandemic Measures
<p>SDG8</p> <p>Decent work and economic growth</p> <ul style="list-style-type: none"> ▶ Increase in unemployment ▶ Economy affected, including supply chain disruption, supply/demand imbalance ▶ Tourism industry stagnant 	<ul style="list-style-type: none"> ▶ Provide immediate job placement ▶ Adjust entertainment tax rates ▶ Hotels receive preferential housing tax and lower tax rate to reduce tax burden ▶ Launch the “I Want to Eat This Today” website to provide a food delivery platform for over 300 selected restaurants in Yilan ▶ If construction projects have permits that are still valid or received a permit in 2020, the construction period is automatically extended for one year without needing to apply again ▶ Large events suspended and event funds converted to county industry relief and revitalization ▶ 18 relief loans for agriculture industry, funded with preferential loan interest rates and can apply for deferred interest for up to two to three years ▶ Coaching for leisure industry to strengthen quality, train employees in professional skills, and generally improve the industry ▶ Promote agricultural tourism and products, reward and subsidize labor and materials, optimize online information, and create electronic ticket system ▶ Introduce “Five Lanyang Fun Spots” and other tourism promotions to promote tourism in Yilan

4) A New Way of Life Amid the Pandemic



SDGs and Related Impacts	Corresponding County Pandemic Measures
<p>SDG11</p> <p>Sustainable cities and communities</p> <ul style="list-style-type: none"> ▶ Urban populations high-risk for virus exposure 	<ul style="list-style-type: none"> ▶ Guidelines formulated to remind consumers to shop on specific days and to urge producers to strengthen social distancing in public areas such as markets, shopping areas, and indoor playgrounds, etc. ▶ Provide rapid testing and PCR testing service to people working in fruit, vegetable, meat, and fish markets ▶ Avoid crowds, adjust how events are held, and reduce number of indoor activities ▶ Suspend operation of 13 industries and 16 scenic areas to raise the pandemic prevention standard to Level 3
<p>SDG12</p> <p>Responsible consumption and production</p> <ul style="list-style-type: none"> ▶ Impact of waste on environment 	<ul style="list-style-type: none"> ▶ Department of Environmental Protection, along with local cleaning teams, established the “Yilan County Epidemic Prevention and Disinfection Team” ▶ Class A clearance teams employed to remove waste from self-quarantine locations, at-home quarantine locations, and pandemic prevention hotels



Implementing pandemic-prevention disinfecting



Photo by Kenji Lai



5

Sustainable
Development Goals
and Results



5) Sustainable Development Goals and Results

**SDG1 NO POVERTY**

End Poverty in All Its Forms Everywhere



Yilan County takes people's livelihood and well-being as the centerpiece of its policymaking. To prevent the disadvantaged from falling into a cycle of generational poverty, the county assists the disadvantaged in a socially fair manner, and actively expands the scope of economic welfare provided to help the disadvantaged remove themselves from the shackles of poverty. It furthermore provides rent subsidies for those families who do not own their own houses by assisting them in finding suitable housing and providing resource consultation and referral services related to youth entrepreneurship loans. The county hopes that residents living in Lanyang Plain will join in this vision of mutual prosperity.

Target 1.4

By 2030, ensure that all men and women, in particular the poor and the vulnerable, have equal rights to economic resources, as well as access to basic services, ownership and control over land and other forms of property, inheritance, natural resources, appropriate new technology and financial services, including microfinance.

Accumulating Assets for Disadvantaged Children to Pave the Way to a Brighter Future

The county's vision includes encouraging parents to start saving funds for their children's future education as soon as possible so as to reduce the impact that being raised in a low-income family can have on the future development opportunities of their children. The county government promotes the "Children and Youth Development Account" to invest in the educational capital of children growing up in poverty. The county hopes to motivate households to participate in the saving plan by providing relative matching incentive measures.

It is estimated that an additional 80 disadvantaged children will join the project every year. Furthermore, the plan includes an annual ten-hour training course that will improve disadvantaged families' knowledge of financial management, career planning, and parental education, etc. The ultimate goal is to reduce the families stuck in the generational poverty trap by imparting them with such concepts as solid financial management and prudent financial decision making. The county government's goal is to increase the savings rate of the Children and Youth Development Account each year, and to raise it to 75% by 2030. This would mean that by the time young adults from low- and middle-income households reach the age of 18, they might be able to receive funds of up to 540,000 NTD.

Responsible Dep.	Indicator	2020	2030 Target
Social Affairs	Children and Youth Development Account Savings Rate	70%	75%

Formula: Deposit rate = (number of deposits: at least one deposit in the current year/number of opening accounts: number of opening accounts in the year of deposit)* 100%.

5) Sustainable Development Goals and Results



Assisting Low (middle and low) Income Households to Escape the Poverty Trap on Their Own

In order to eliminate employment discrimination of able-bodied individuals among low (low-middle-income) households, Yilan County matches qualified employees with social welfare services to improve their family's economic status and assist them in becoming self-reliant. Through the process of employment in the public sector, the program will assist them in improving their interpersonal knowledge and building a mutual support network. It will also enable employees to improve mental strengths such as self-awareness and self-confidence, which encapsulates work attitude, interpersonal relationship skills, self-management, and the drive to learn. Furthermore, it will teach them how to approach the development of their futures with a positive, enterprising attitude.

As of now, related programs consistently allot a quota of 95 low-income (low-middle-income) able-bodied individuals each year. Those in the program will be linked up with different professional service systems and provided with diversified welfare services to remove employment barriers with the ultimate goal of assisting them in becoming normal members of the workforce.

Responsible Dep.	Indicator	2020	2030 Target
Social Affairs	Employment rate	96%	100%

Formula: the employment rate = (number of people employed / approved number of people in the plan) * 100%.

Promoting Fair Housing and Rent Subsidies for Owner-Occupied Residences

Every year, Yilan County subsidizes monthly rents for low-income households, lower-middle-income households, socioeconomically disadvantaged groups, and general single-person households according to their application qualifications. The county also raises the subsidy amount for socially disadvantaged and low-income households and increases their rental options. The end result is a reduction of the financial burden on renters and the implementation of fair housing.

Currently, the county is accepting applications for the first and second periods of rent subsidies in 2020. There are 1,908 households in total with 1,663 households being eligible for full (100%) premium subsidies. As we look toward 2030, the county will continue to care for the disadvantaged regardless of what economic fluctuations might occur to reduce their financial burdens.

Responsible Dep.	Indicator	2020	2030 Target
Land Administration	Rate of the number of eligible rental subsidy households	100%	100%

Method of Assessment : Approval of rent subsidies based on the number of subsidized households allotted by the central government.

5) Sustainable Development Goals and Results

**SDG1 NO POVERTY**

End Poverty in All Its Forms Everywhere



Supporting Youth Entrepreneurship by Providing Loan Consultations and Loan Referral Services

As for assistance to young entrepreneurs, county government counselors will provide them with loan consultations and loan referrals to address the queries and requirements of their loans. The county will further provide one-on-one case management services and links to counseling of related entrepreneurial resources to entrepreneurs aged 18 to 45 who intend to start a business, operate with less than stellar track records or who are not on track in the initial stage of entrepreneurship.

In addition, the county also recruits experienced entrepreneurs to mentor those who need assistance in the entrepreneurial process by providing individualized guidance and sharing entrepreneurial experiences. One aspect of mentoring responsibilities would be the referral of young people to the Ministry of Labor's entrepreneurial services. The referral content covers Micro-Business Startup Phoenix Program loans, entrepreneurship loans for the unemployed in insurance, entrepreneurship training courses, and entrepreneurship consulting.

Responsible Dep.	Indicator	2020	2030 Target
Ministry of Labor	Provide youth entrepreneurship consulting and referral service achievement rate (expected to be 150 referrals per year)	100%	100%

Formula: Achievement rate = (actual number of referral services/estimated number of referral services)*100%.



Youth entrepreneurship consulting and loan referral services

5) Sustainable Development Goals and Results



SDG2 Zero Hunger

End Hunger, Achieve Food Security, Improve Nourishment, and Promote Sustainable Agriculture



Pioneering autonomous regulations promote food and agriculture education and aim to create an environment for local healthy food for residents to have a nutritious diet that covers all nutritional needs. Yilan County has encouraged local production and consumption, assisting farmers in employing smart agricultural production technologies to improve the production efficiency of agricultural products year by year and take care of county residents' health.

Target 2.1

End hunger and ensure access by all people, in particular the poor and people in vulnerable situations, including infants, to safe, nutritious and sufficient food all year round.

Caring for the Disadvantaged to End Hunger

In constructing a comprehensive service resource network to rapidly rescue disadvantaged families and satisfy their needs, the government continues to develop and connect social resources from the public and private sectors, integrating and providing various resources and materials to avoid waste and maximize efficiency. For those in urgent need of relief supplies, the government customizes integrated services case by case in addressing family problems, offering assistance to disadvantaged groups through resource integration and service localization to end hunger.

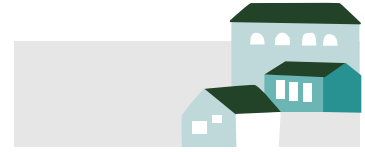
Responsible Dept.	Indicator	2020	2030 Target
Social Affairs	Number of donated materials	34,982	40,000

5) Sustainable Development Goals and Results



SDG2 Zero Hunger

End Hunger, Achieve Food Security, Improve Nourishment, and Promote Sustainable Agriculture



Offering Free Lunch for Elementary and Junior High School Students

An ancient saying goes, “To the people, food is heaven.” In response to soaring prices, Yilan County has implemented the policy “Free Lunch for Elementary and Junior High Students” proposed by the county mayor since September 2019 to provide lunch, together with local food and agriculture education as well as nutrition knowledge, allowing students to understand core concepts in food education while having lunch. Moreover, the policy provides students with a healthy diet including balanced nutrition, takes care of disadvantaged students, and also reduces the burden on parents.

As a survey on the nutrition of citizens indicates that people generally have insufficient calcium intake, the government has carried out the project “Healthy Lunch Upgrades 2.0” since September 2020 to not only offer students free lunch but also improve the quality of meals for them to eat healthier. In addition to three dishes and one soup, Yilan County further provides one dairy product a week at lunch to increase students’ intake and acceptance of dairy products. In regard to the quality of dairy products, with the use of local organic ingredients, students are provided with organic vegetables twice a week, and a team of nutritionists reviews the sources of ingredients daily to ensure that each lunch uses domestically traceable ingredients.

Responsible Dept.	Indicator	2020	2030 Target
Education	Number of schools participating in Free Lunch for Elementary and Junior High Students	100%	100%

Formula: Implementation ratio = (schools participating / total schools in the county) * 100%.



Children enjoying their lunch

5) Sustainable Development Goals and Results



Target 2.2

By 2030, end all forms of malnutrition, including achieving, by 2025, the internationally agreed targets on stunting and wasting in children under 5 years of age, and address the nutritional needs of adolescent girls, pregnant and lactating women and older persons.

Addressing Nutritional Needs of the Elderly with the Elderly Canteen Project

Yilan County became an aging society in 1990. As of the end of December 2020, the total population of the county stands at 453,087, with the number of elderly people over 65 accounting for 78,202, which is 17.26% of the total population, indicating that the county population is increasingly aging.

The Elderly Canteen Project is one of the universal welfare plans for the elderly launched by the county, with volunteers in local communities or welfare agency groups providing catering services. Meals are available at certain locations or specifically delivered to the elderly. The above measures, along with granting subsidies, are meant to encourage community organizations and welfare groups to join delivery networks, establish an autonomous operation model, and give full play to the spirit of mutual assistance in community care, such that community elders can gain access to more opportunities for social participation and obtain stable healthy meals. With lunch provided every Monday to Friday in communities to avoid the elderly reheating meals and having unhealthy diets at home alone, the elderly are encouraged to interact with others while having lunch at certain locations, all the while maintaining a nutritious diet.

A total of 95 community groups applied for the project in 2020, 115 in 2021, and the number is estimated to reach 145 in 2030.

Responsible Dept.	Indicator	2020	2030 Target
Social Affairs	Number of applicants (community groups)	65%	100%

Formula: Achievement ratio = (applicants / estimated applicants) * 100%.



Lunch time of the Elderly Canteen Project

5) Sustainable Development Goals and Results



SDG2 Zero Hunger

End Hunger, Achieve Food Security, Improve Nourishment, and Promote Sustainable Agriculture



Target 2.4

By 2030, ensure sustainable food production systems and implement resilient agricultural practices that increase productivity and production, that help maintain ecosystems, that strengthen capacity for adaptation to climate change, extreme weather, drought, flooding and other disasters and that progressively improve land and soil quality

Assisting in Application of Agricultural Facilities to Improve Production Efficiency

Technical assistance is offered to farmers in setting up agricultural facilities (greenhouses, net houses) to strengthen capacity for adaptation to climate change and extreme weather disasters (such as droughts, floods). In addition, smart labor-saving equipment, auxiliary devices, and sensing components are put into application to relieve the burden on farmers and reduce labor demand (in tackling agricultural labor shortage), improving production efficiency and output of agricultural products.

In terms of agricultural facilities, a total of 15 hectares of greenhouses and net houses is expected to be built under the guidance of the county government, with 9 hectares completed in 2020. In addition, environmental control systems, light control electric external shadings, and misting cooling systems are expected to be built for a total of 50 households, with 21 guided to finish the construction. These two projects are expected to be completed in 2030.

Responsible Dept.	Indicator	2020	2030 Target
Agriculture	Achievement ratio of area of established greenhouses and net houses with structural steel frames supported by the government	60%	100%
	Achievement ratio of constructing environmental control systems, light control electric external shadings, and misting cooling systems	42%	100%

Formula: (1) Achievement ratio of area of established greenhouses and net houses = (area of construction under guidance / total area) * 100% (2) Achievement ratio of constructing system equipment = (households under guidance / total households) * 100%



Simplified plastic greenhouses and net houses



Structural steel frames



Water quality filtration system



Greenhouse environmental control system

5) Sustainable Development Goals and Results

**SDG3 Good Health and Well-Being**

Ensure Healthy Lives and Promote Well-Being for All at All Ages



To create an environment for healthy living, Yilan County is dedicated to providing a comprehensive health care network. The health care network aims to promote disease prevention; advocate self-care; launch suicide prevention, narcotics hazard prevention, and tobacco hazard prevention campaigns; ensure health care quality and the well-being of each individual; and deliver substantial medical care.

Target 3.1

By 2030, reduce the global maternal mortality ratio to less than 70 per 100,000 live births.

Reducing the Perinatal Mortality Rate of the County

To reduce the perinatal mortality rate within the county, Yilan County has been promoting the program for follow-up care of pregnant women and infants in high-risk groups in collaboration with National Yang Ming Chiao Tung University Hospital, Lo-Hsi Medical Foundation Lotung Poh-Ai Hospital, Camillian Saint Mary's Hospital Luodong, Dung Hsing OB/GYN Clinic, and Yilan County Midwives Association.

In 2020, there were 12.8 maternal deaths on average per 100,000 live births in Yilan County (the maternal mortality rate is 12.8‰). It is lower than the previous year (which was 14.9‰) by 2.1‰, but still higher than the average of Taiwan in 2019 (which was 11.6‰). Given the situation, the Yilan County Government decided to provide first-trimester (17 weeks gestation) prenatal examination and health education services for pregnant women with health risk factors (e.g. adolescent pregnancy, smokers, gestational diabetes in the second or third trimester, underage and pregnancy out of wedlock, and advanced maternal age). With health behavior assessments and the pregnancy tracking database, these pregnant women can receive follow-up care as well as resource and referral services even six weeks or six months after pregnancy termination, which will further reduce the perinatal mortality rate within Yilan County.

Responsible Dep.	Indicator	2020	2030 Target
Public Health	Perinatal Mortality Rate of Yilan County	12.8 ‰	0.7‰

Formula: Perinatal mortality rate = [(Number of perinatal deaths (includes stillbirths >=28 weeks gestation and all early neonatal deaths)/total births (includes all live births and stillbirths >=28 weeks gestation))*1000‰].

5) Sustainable Development Goals and Results



SDG3 Good Health and Well-Being

Ensure Healthy Lives and Promote Well-Being for All at All Ages



Target 3.2

By 2030, end preventable deaths of newborns and children under 5 years of age.

Reducing the Neonatal and Under-5 Mortality Rate of the County

The neonatal mortality rate and the infant mortality rate of Yilan County in 2020 were 3.2‰ and 3.9‰, while the rates of the nation were 2.4‰ and 3.6‰ respectively. This shows that the county is imperatively in need of a proper infant care system.

The Yilan County Government launched the program for pediatric care and prevention with designated doctors for children aged 0 to 6 years. It is set to improve the quality of pediatric care and guarantee that children have access to medical services. By connecting with the public health and social welfare system, the program can implement a referral and reporting mechanism, vaccination, and health examinations, such as hearing tests, oral checkups, and developmental disorders examination, allowing each and every child to receive timely and continuous health care.

Responsible Dep.	Indicator	2020	2030 Target
Public Health	Neonatal Mortality Rate of Yilan County	3.2‰	3.6‰
	Infant Mortality Rate of Yilan County	3.9‰	5.2‰

Formula: (1) Neonatal Mortality Rate (NMR) = (Number of neonatal deaths less than 28 days of age within one year/number of live births within one year)*1,000‰ .(2) Infant Mortality Rate (IMR) = (Number of infant deaths in the first year of life/the number of live births)*1,000‰ .

Note: According to the WHO, the target NMR and IMR for 2030 are 12‰ and 25‰ . Given that the number of newborns in Taiwan and Yilan County is decreasing year after year, the parameter is small and easily affected by outliers. As a result, the Yilan County Government has decided to use the highest rates between 2018 and 2020 as the targets for 2030 and will make adjustments every year. (The NMR of Yilan County from 2018 to 2020 were 4.9‰ , 2.6‰ , and 3.2‰ , while the IMR were 7.5‰ , 4.3‰ , and 3.9‰ respectively.)

5) Sustainable Development Goals and Results

**Target 3.3**

By 2030, end the epidemics of AIDS, tuberculosis, malaria and neglected tropical diseases and combat hepatitis, water-borne diseases, and other communicable diseases.

Implementing the Monitoring and Prevention of Hepatitis

Hepatitis B and hepatitis C are the most common types of viral hepatitis in Taiwan. Every year, approximately 13,000 people die of chronic liver diseases, cirrhosis, and liver cancer. To prevent hepatitis infections, Yilan County expanded the eligibility pool for preventive health care on Sep. 28th, 2020 and offered people aged 45 to 79 years (40 to 79 for indigenous peoples) one free hepatitis B and hepatitis C screening. According to the statistics, however, nearly 70% of people who are eligible have not yet received hepatitis screening services.

As of August 2021, the hepatitis screening rate in Yilan County was 24.31%. To reach the target of 50% by 2030, the responsible department will keep promoting and encouraging people who are eligible to receive hepatitis screening based on the monthly list provided by the Health Promotion Administration, Ministry of Health and Welfare. For those that test positive for hepatitis, referrals and treatments will be in place along with follow-up monitoring by healthcare facilities so as to combat hepatitis.

Responsible Dep.	Indicator	2020	2030 Target
Public Health	Hepatitis B and hepatitis C screening rate in Yilan County	1.5%	50%

Formula: Hepatitis B and hepatitis C screening rate = (Number of people aged 45-79 years who have received hepatitis screening / the population of said age group) *100%.

5) Sustainable Development Goals and Results



SDG3 Good Health and Well-Being

Ensure Healthy Lives and Promote Well-Being for All at All Ages



Enhancing the Prevention and Management of Tuberculosis

In 2020, there were 41.2 tuberculosis cases per 100,000 population in Yilan County. The number was as high as 132.2 in the two mountain indigenous townships (Datong Township and Nan'ao Township), which is way higher than that of the nation (33.2 cases per 100,000 population). This shows that the prevention of tuberculosis is crucial to Yilan County, especially in the two mountain indigenous townships.

To reduce the occurrence of tuberculosis, the responsible department will provide patient-centered care by delivering medicine to the patients every day, continue to help epidemic prevention personnel improve their tuberculosis-related knowledge and professional skills, and organize training courses on a regular basis to achieve comprehensive management of tuberculosis cases. In addition, the authority is set to implement contact tracing measures with follow-up screening, conduct LTBI testing of all age groups, and arrange LTBI treatment for those tested positive in case they become active tuberculosis cases. Furthermore, people of high-risk groups, including residents in mountain indigenous townships, long-term care facilities, and correctional institutions, senior citizens, and diabetic patients, will receive free chest X-rays and LTBI screening tests. The earlier these cases are found, the sooner treatment can be provided to prevent community transmission.

Moreover, residents in indigenous areas are entitled to screening services in a more diverse and proactive way. Combined with the Integrated Delivery System (IDS) for indigenous areas, the Public Health Bureau can arrange mobile chest X-ray services. It will also work with the main healthcare facilities that residents in mountain indigenous townships mostly go to (National Yang Ming Chiao Tung University Hospital, Lotung Poh-Ai Hospital, Saint Mary's Hospital Luodong) and offer proactive testing. As for residents in areas where the mobile X-ray vehicle screening system is not accessible or people with reduced mobility, a symptom evaluation and a molecular Xpert MTB/RIF test will be used to replace chest X-rays.

In the long run, we expect to enhance the public health and epidemic prevention system through various strategies. With the medical resources of hospitals and examination systems, we are allowed to monitor and manage tuberculosis cases, implement contact tracing and proactive measures to effectively reduce the spread of infection in the community, and eventually ensure the well-being of our citizens by lowering the number of tuberculosis cases to 22.2 per 100,000 population by 2030.

Responsible Dep.	Indicator	2020	2030 Target
Public Health	Number of tuberculosis cases per 100,000 population in Yilan County	41.2	22.2

Formula: Estimated number of tuberculosis cases per 100,000 population this year = number of cases per 100,000 population last year minus 6% of the number of cases per 100,000 population last year

5) Sustainable Development Goals and Results



Continuing to Promote the Prevention of Malaria

In 2020, there were no reported cases of malaria in Yilan County. According to the WHO, there are approximately three to five hundred million cases of malaria around the world every year, resulting in about one million deaths. Back in the late 1940s, malaria was a serious endemic disease in Taiwan. The population of Taiwan was six million back then, and of which one fifth of the people were infected with malaria. As a result, Taiwan implemented its malaria control and elimination program in 1946, and was officially certified as malaria-free by the WHO in 1965.

Ever since the eradication of malaria, only a few sporadic indigenous cases along the northern coast of Taiwan in 1972, induced cases in a hospital in Taipei City in 1995, and two introduced cases in Taitung County in 2003 have been found. Since 1965, about 10 to 30 imported cases have been reported each year, most of which are from Southeast Asia, Africa, and Oceania.

To strengthen malaria prevention in Yilan County, the Public Health Bureau continues to promote malaria prevention activities, keep close surveillance of Anopheles mosquitoes, monitor the density of malaria vectors on a regular basis, disseminate information about how standing water is the breeding sites of malaria vectors, and take a more proactive approach for vector control.

Responsible Dep.	Indicator	2020	2030 Target
Public Health	Number of confirmed cases of malaria in Yilan County	0	0

Promoting HIV/AIDS Prevention

In 2015, the WHO outlined the vision of three zero strategies in HIV/AIDS prevention (zero new HIV infections, zero AIDS-related deaths, and zero discrimination) and expected to achieve the 95-95-95 target (95% of people living with HIV knowing their HIV status; 95% of people who know their status on treatment; and 95% of people on treatment with suppressed viral loads) by 2030. As a result, the Yilan County Government has been promoting HIV testing for all, especially for people in younger age groups and patients with STDs. The Harm Reduction Program is also on the way to help with the management of these cases, including follow-up care, health care, transitional resources and services, and companion services.

Responsible Dep.	Indicator	2020	2030 Target
Public Health	Percentage of people living with HIV knowing their HIV status; percentage of people who know their status on treatment; and percentage of people on treatment with suppressed viral loads	90-90-90 target	95-95-95 target

Methods of assessment: Targets set by the Taiwan Centers for Disease Control, Ministry of Health and Welfare.

5) Sustainable Development Goals and Results



SDG3 Good Health and Well-Being

Ensure Healthy Lives and Promote Well-Being for All at All Ages



Target 3.4

By 2030, reduce by one-third premature mortality from non-communicable diseases through prevention and treatment and promote mental health and well-being.

Helping Children Maintain a Healthy Body Weight

According to the statistics, 34.3% of people aged over 13 years in Yilan County are classified as overweight or obese based on their body mass index. In Taiwan, the prevalence rate of obesity-related chronic diseases, such as hyperuricemia, hyperlipidemia, high blood pressure, and diabetes, is increasing year by year. Nowadays, due to the significant influence of varied diets and obesogenic environments, it is extremely important to make sure schoolchildren have the knowledge of what constitutes a healthy diet. Therefore, in order to lower obesity rate and reduce the risks of obesity-related diseases, regular exercise and a healthy, balanced diet are necessary.

In Yilan County, the percentage of people over 13 years old who exercise regularly increased from 33.7% in 2016 to 36.3% in 2020, meaning a 2.6% increase. The data also shows that 83.7% of residents in Yilan County are physically active, which means the remaining 16.3% are physically inactive. Therefore, to improve the situation, Yilan County will continue to encourage county residents to exercise regularly, stay physically active, and stress the importance of regular exercise and a healthy diet as its two main strategies of health promotion.

By introducing health promotion and the concept of life skills and healthy body types into teaching materials, the Yilan County Government hopes to raise the awareness of healthy body weight and reduce children's consumption of sugar-sweetened beverages. With the promotion of regular exercise and its benefits, Yilan County aims to encourage its residents to be physically active and eventually reduce obesity and the risks of obesity-related diseases.

Responsible Dep.	Indicator	2020	2030 Target
Public Health	Percentage of people aged over 13 years who are overweight or obese	34.3%	33.6%
	Percentage of physically active people in Yilan County	83.7%	88.2%
	Percentage of people aged over 13 years who exercise regularly	33.6%	37.1%

Methods of assessment: The 2030 target is set with 2020 as the base year.

Formula: (1) Percentage of people aged over 13 years who are overweight or obese = The data of 2020 minus the average of percentage between the year 2011 and 2020 based on the report on school sports, physical fitness, and exercise by the Sports Administration, Ministry of Education (0.7%). (2) Percentage of physically active people in Yilan County = The data of 2020 plus the average of percentage between the year 2011 and 2020 based on the report on school sports, physical fitness, and exercise by the Sports Administration, Ministry of Education (4.5%). (3) Percentage of people aged over 13 years who exercise regularly = The data of 2020 plus the average of percentage between the year 2011 and 2020 based on the report on school sports, physical fitness, and exercise by the Sports Administration, Ministry of Education (3.5%).

5) Sustainable Development Goals and Results



Reducing the Age-Standardized Suicide Rate in Yilan County

The age-standardized suicide rate in Yilan County in 2020 is 13.5 per 100,000 individuals, the fifth-highest in Taiwan, while the number was 15.4 per 100,000 individuals last year. Despite dropping down one place compared to last year, the number is still higher than the age-standardized suicide rate of the nation (11.8 per 100,000 individuals).

To reduce the age-standardized suicide rate in Yilan County, the responsible department has developed various strategies for different age groups accordingly. For teenagers, tertiary guidance and counseling by the Education Department is available to support their physical and mental development and ensure their right to education; for middle-aged people, the authority has established a reporting channel with the Labor Affairs Department to provide care for employees who take leaves of absence or resign involuntarily. If there are any cases of high suicide risks, the authority will follow the procedures and refer these cases to the department in charge. As for senior citizens, Yilan City has launched the community mental health care program and the health cornerstone program with primary medical facilities, hospitals, and long-term care facilities to take care of their mental health.

On the other hand, in response to high-toxicity substances (e.g. pesticides, charcoal), we have formulated corresponding strategies to reduce the suicide rate. To be more specific, the strategies come in three parts. First, regarding solid and liquid lethal pesticides, the Public Health Bureau and the Agriculture Department will strengthen the control and guidance of pesticide use. For example, the sale and use of paraquat have been prohibited and farmers are asked to turn in paraquat waste at farmers' associations. Second, in terms of charcoal, suicide prevention posters will be displayed in malls during the Mid-Autumn Festival holidays, the only time of the year when malls are allowed to openly display charcoal. Finally, as for locations prone to suicides (e.g. river banks and coastal areas), suicide prevention signs will be installed with increased police patrol.

Responsible Dep.	Indicator	2020	2030 Target
Public Health	Age-standardized suicide rate	13.5 per 100,000 population	11 per 100,000 population

Formula: Standardized Mortality Rate = $[\sum (\text{age-specific death rate multiplied by age-specific standardized population})] / \text{total standardized population}$.

5) Sustainable Development Goals and Results



SDG3 Good Health and Well-Being

Ensure Healthy Lives and Promote Well-Being for All at All Ages



Target 3.5

Strengthen the prevention and treatment of substance abuse, including narcotic drug abuse and harmful use of alcohol.

Providing Comprehensive Follow-up Guidance and Developing Recovery Resources for Drug Addicts

Drug addiction is a form of brain disorder. Just like those with chronic diseases such as high blood pressure and diabetes, people with drug addiction are highly likely to relapse. The WHO suggests that providing better recovery services and treatment for drug addicts can reduce or even stop their drug use and help them get back to their normal lives. To encompass more drug addicts into the drug addiction recovery system and provide more comprehensive treatment, the Public Health Bureau will integrate its network of resources into follow-up guidance for drug addiction cases and encourage medical facilities to proactively engage in drug addiction medical services. This aims to make drug addiction recovery services more accessible in the nation and enhance the efficacy of treatment.

As a result, the Yilan County Government has been promoting drug prevention activities and implementing follow-up guidance services for people with drug addiction. On the other hand, the authority continues to develop recovery resources in response to the traits and needs of drug or alcohol addiction cases within the county. Moreover, by analyzing these cases, the authority will organize anti-drug campaigns in the neighborhood and disseminate knowledge and information to people in the community, eventually strengthening the drug prevention network in communities and implementing drug prevention strategies.

Responsible Dep.	Indicator	2020	2030 Target
Public Health	Coverage rate of case management services	75%	87%
	Coverage rate of medical facilities with drug and alcohol cessation services	43%	60%

Formula: (1) Coverage rate of case management services = Number of people receiving follow-up guidance / the number of people in need of follow-up guidance *100% (the number of imprisonment and death is subtracted). (2) Coverage rate of medical facilities with drug and alcohol cessation services = Number of medical facilities that actually provide drug and alcohol cessation services / the number of designated medical facilities with drug cessation services within the county *100%.

5) Sustainable Development Goals and Results



Target 3.7

Ensure universal access to sexual and reproductive health-care services, including for family planning, information and education, and the integration of reproductive health into national strategies and programs.

Adopt Parenting-Friendly Measures and Establish Parent-Child Centers

Currently, in order to fulfill the parenting needs of different family types and support the primary caregivers of toddlers, Yilan County offers a wide variety of services at parent-child centers, including parenting advice, child development counseling, activities for grandparents and grandchildren, and childcare and social welfare resources. With professional counseling services, we expect to assist each family with their parenting plans, provide a platform for parents to share their experiences, and construct a parenting-friendly environment. In the parent-child centers in Yilan County, you can find activities that are both educational and recreational, such as parent-child shared reading and playing. Through these activities, parents can learn how to interact with their children, while children can have a happy childhood. This support system allows parents to manage both parenting and their work. To expand the capacity of this service, the Yilan County Government will continue to establish at least one parent-child center in each township. The goal is to relieve the burden of parenting for parents with parent-child services and encourage other family members to participate in these activities.

In 2020, a total of 10 parent-child centers were established within the county, two of which were in Yilan City. The county government will continue to achieve the goal of one parent-child center per township by establishing in Datong, Nan'ao, and other indigenous areas, making a total of 13.

Responsible Dep.	Indicator	2020	2030 Target
Public Health	Achievement rate of parent-child centers	76%	100%

Formula: Achievement rate = (Number of parent-child centers / targeted number of centers) *100%.



Pictures of the parent-child centers

5) Sustainable Development Goals and Results



SDG3 Good Health and Well-Being

Ensure Healthy Lives and Promote Well-Being for All at All Ages



Target 3.8

Achieve universal health coverage (UHC), including financial risk protection, access to quality essential health-care services and access to safe, effective, quality and affordable essential medicines and vaccines for all.

Providing Complete Dentures for Yilan County Residents Aged Over 65 Years (55 for Indigenous Peoples)

According to the WHO and professional doctors, dental health is essential to the physical and mental health of senior citizens. Good dental health can slow down the process of aging and developing disabilities, which indirectly reduces the costs of long-term care and social welfare.

To protect the dental health of senior citizens and people with disabilities in Yilan County, the government provides complete denture subsidies. This project can ease their economic burden, promote the importance of dental health, reduce the risks of diseases, ensure their quality of life, safeguard their health rights, and improve their satisfaction with life.

Responsible Dep.	Indicator	2020	2030 Target
Social Affairs	Percentage of people eligible for complete denture subsidies	97.19%	99.06%

Formula: Percentage of people eligible for complete denture subsidies = (Number of eligible people/the number of people the budget can subsidize)*100%.

5) Sustainable Development Goals and Results

**Target 3.a**

Strengthen the implementation of the World Health Organization Framework Convention on Tobacco Control in all countries, as appropriate.

Reducing the Prevalence of Smoking in Adults

The prevalence of smoking in people aged over 18 years in Yilan County is 20%, which is higher than that of the nation (13.1%). According to the data in 2020, 31.3% of men and 7% of women in Yilan County smoked, while the prevalence of smoking in Taiwanese men and women were 23.1% and 2.9% respectively.

To reduce the prevalence of smoking in adults and create a healthier smoke-free environment for citizens, apart from continued enforcement of the Tobacco Hazard Prevention Act, places where tobacco use is restricted are subjected to on-the-spot inspection. This is an integral part of tobacco prevention. In addition, the responsible department has been promoting the network of smoking cessation services and organizing smoking cessation classes as well as counseling services at smoke-free hospitals, workplaces, campuses, and communities to help heavy tobacco users quit smoking. They have access to health education sessions, counseling services, a quitline, and other services and they can choose as they wish. This can encourage heavy users to quit smoking as early as possible so as to protect the health of themselves and their family.

Responsible Dep.	Indicator	2020	2030 Target
Public Health	Prevalence of smoking in Taiwanese people aged over 18 years	20%	14%

Methods of assessment: In accordance with the targets set by the Health Promotion Administration, Ministry of Health and Welfare, which conform to the targets for NCDs by WHO - a 30% relative reduction in prevalence of current tobacco use.

5) Sustainable Development Goals and Results



SDG3 Good Health and Well-Being

Ensure Healthy Lives and Promote Well-Being for All at All Ages



Health education sessions to disseminate the hazards of smoking at places where tobacco use is restricted according to the Tobacco Hazard Prevention Act.



Smoking cessation classes at smoke-free hospitals, workplaces, campuses, and communities allow heavy tobacco users to have access to different smoking cessation services as they wish.



Anti-smoking campaigns at several venues to disseminate the hazards of smoking, second-hand and third-hand smoke, and vaping, and the health benefits of quitting smoking.

5) Sustainable Development Goals and Results

**SDG4 QUALITY EDUCATION**

Ensure inclusive and equitable quality education and promote lifelong learning opportunities for all



With great attention given to “whole person education” that centers on the growth of learners for building a friendly educational environment, Yilan County waives tuition and miscellaneous fees for school children to reduce the financial burden on parents, encourages life-long learning and self-improvement for adults, and provides supports and subsidies for disadvantaged and physically/mentally disabled students, thereby ensuring every student can have equal access to education resources and knowledge and obtain opportunities to contribute what they have learned to the society.

Target 4.1

By 2030, ensure that all girls and boys complete free, equitable and quality primary and secondary education leading to relevant and effective learning outcomes.

Promoting Exemption of Tuition and Miscellaneous Fees for Elementary and Junior High School Students

Creating a good and safe learning environment with excellent teachers to meet the various needs of students is one of the core values of education in the county. At present, children in Taiwan begin school at the age of 6 and are exempt from paying tuition and miscellaneous fees during their elementary and junior high school years (from the ages of 6-15). Tuition is also not required for students pursuing further education in senior (vocational) high schools. Through the above measures, the county hopes to improve the quality and learning ability of its citizens so that they can make a more substantial contribution to society.

To further ensure that the primary and secondary education of children living in Yilan County is free, equitable, and of higher quality, the government provides students with free lunches and free books, continuously improves upon the educational welfare of its students, and strives to make Yilan the most livable and happiest of cities.

Since 2020, the county has promoted the exemption of tuition and miscellaneous fees in 98 elementary and junior high schools. In 2021, a policy of exempting textbook fees in 98 schools was implemented. By 2030, it is expected that tuition and miscellaneous fees as well as textbook fees will remain free in elementary and junior high schools throughout the county.

Responsible Dep.	Indicator	2020	2030 Target
Education	Number of elementary and junior high schools with free tuition and miscellaneous fees	100%	100%

Formula: Ratio of elementary and junior high schools free of tuition and miscellaneous fees = (# schools participating / # total elementary and junior high schools in the county) * 100%

5) Sustainable Development Goals and Results

**SDG4 QUALITY EDUCATION**

Ensure inclusive and equitable quality education and promote lifelong learning opportunities for all

**Target 4.2**

By 2030, ensure that all girls and boys have access to quality early childhood development, care and preprimary education so that they are ready for primary education.

Providing and Promoting Public Childcare Services

The government tirelessly strives to promote public childcare services to make public education more available and accessible to children, increase the opportunities for children to enter kindergartens, and ensure that every child in need can receive education and care services.

Yilan County plans to increase the rate of public education and childcare services by adding kindergartens to Jinyang, Wuta, Lixing, and Dongshan Elementary Schools and establishing non-profit kindergartens in Qinggou and Zhuangwei. Therefore, it is estimated that the rate of public childcare services in the county will reach about 53.7% in 2024.

The county has also promoted the reduction of school fees and childcare allowances, with monthly school fees being no higher than NT\$1,500 for studying in public kindergartens, no higher than NT\$2,500 in non-profit kindergartens, and no higher than NT\$3,500 in quasi-public or private kindergartens. For children enrolled in private kindergartens, an additional childcare subsidy of at least NT\$2,500 a month is granted to families having children 2 to 4 years of age who are not placed by the government if their household income tax rate is less than 20%.

In 2020, the average rate of public childcare services in Taiwan was about 32%, while the rate in Yilan was about 50%—figures that have continued increasing in recent years. Despite declining birth rates, it is estimated that by 2030, the rate of public childcare services in the county will remain at about 53.7%—a rate at which the county can provide parents with more affordable, higher-quality public education and childcare services. These benefits all go toward assisting families in raising their children.

Yilan County plans to increase the rate of public education and childcare services by adding kindergartens to Jinyang, Wuta, Lixing, and Dongshan Elementary Schools and establishing non-profit kindergartens in Qinggou and Zhuangwei. Also, the county has promoted the reduction of school fees and childcare allowances, with monthly school fees being no higher than NT\$1,500 for studying in public kindergartens, no higher than NT\$2,500 in non-profit kindergartens, and no higher than NT\$3,500 in quasi-public or private kindergartens. For children enrolled in private kindergartens, an additional childcare subsidy of at least NT\$2,500 a month is granted to families having children 2 to 4 years of age who are not placed by the government if their household income tax rate is less than 20%.

In 2020, the average rate of public childcare services in Taiwan was about 32%. Despite declining birth rates, it is estimated that by 2030, the rate of public childcare services in the county will exceed 50% so that the county can provide parents with more affordable, higher-quality public education and childcare services to assist families in raising their children.

Responsible Dep.	Indicator	2020	2030 Target
Education	50% of public education and childcare services	100%	100%

Formula: Achievement rate = actual ratio of public education and childcare services / target ratio of public education and childcare services.

5) Sustainable Development Goals and Results



Target 4.5

By 2030, eliminate gender disparities in education and ensure equal access to all levels of education and vocational training for the vulnerable, including persons with disabilities, indigenous peoples and children in vulnerable situations.

Providing Diversified Education for Disadvantaged Students

To take care of disadvantaged families and students, the county promotes after-school care services in elementary schools and has implemented a specially designed program in which students are not only trained to be self-discipline but also given academic guidance and offered a diverse array of courses such as physical fitness, team-building events, or art activities. With these measures, unfavorable family conditions are less likely to pose as barriers to the acquisition of students' additional skills. Moreover, the program prevents students from loitering outside and engaging in deviant behavior. The abundant resources invested by the government all go toward ensuring the safety of students from disadvantaged families during after-school hours.

In Yilan, schools are encouraged to provide non-profit, universal care for creating affordable and quality education services, with service hours specially designed for the general working hours of parents to satisfy their needs and address childcare problems. Suitable and diversified after-school activities are also planned to effectively promote the physical and mental growth of students, thereby fully realizing the vision of after-school care services in Yilan. From individual households to the community as a whole, families of all classes will reap the benefits of these programs.

In addition, the county also holds education programs for children of new residents which center on improving their learning environment and supporting their development of a wide variety of abilities. These programs are designed to cultivate multicultural literacy of teachers and students in schools with activities such as the Multicultural International Day and consultation for children of new residents. Educational seminars for teachers, parents and students from immigrant families are also organized. Furthermore, Chinese language remedial courses are offered for immigrant students to bridge any academic gap stemming from differing family conditions, language problems, or maladaptation to daily life, allowing these children of new residents to diversify their abilities.

Responsible Dep.	Indicator	2020	2030 Target
Education	Ratio of disadvantaged students participating in diversified education	100%	100%
	Ratio of immigrant students applying for learning support programs	100%	100%

Formula: (1) ratio of disadvantaged students participating in diversified education = (number of students receiving subsidies/ number of applicants in schools) * 100% (2) ratio of immigrant students applying for learning support programs = (number of students receiving subsidies/number of applicants in schools for learning support services) * 100%

5) Sustainable Development Goals and Results

**SDG4 QUALITY EDUCATION**

Ensure inclusive and equitable quality education and promote lifelong learning opportunities for all

**Assisting Students with Disabilities in Appropriate Placement**

In response to service needs of students with disabilities, and per regulations of tradition services for guiding students with disabilities at various stages of education, schools at all levels should assess these individuals' abilities and needs and formulate appropriate transition plans, coordinating with social, labor and health authorities to provide students with comprehensive, continuous transition counseling and services.

In addition to conducting transition activities across educational stages such as school visits according to the schedule every year, the government also holds seminars for counseling and suitable placement for parents, students, and teachers to understand available pathways to further education and the promise of students' future paths. Accordingly, each school holds transition meetings to confirm students' decisions for further education and their interests, assisting them in the enrollment of their desired schools with relevant guidelines. Except for a small number of students who have fallen seriously ill or are determined to directly enter the workplace, the above measures guarantee that every student has access to further education; the rate of placement through these measures is 100%.

Responsible Dep.	Indicator	2020	2030 Target
Education	Rate of students receiving suitable counseling and placement	100%	100%

Formula: the rate = (the number of disabled students in placement/the number of disabled students in application) * 100%



Transition visits for students

5) Sustainable Development Goals and Results



Providing Employment Assistance to Students with Disabilities

In recent years, career transitions for students with disabilities have become one of the important issues in special education. After finishing compulsory education, although most students with disabilities go on to further education, some may plan to enter the workplace according to their needs. Therefore, seminars held by the government not only give information about higher education but also inform students about the assistance and resources available to them upon entering the workforce, thereby facilitating the transition of disabled students from schools to the workplace after graduation.

Furthermore, to care for and meet the requirements of disabled students, schools in Yilan invite parents, students, relevant personnel, and representatives from labor affairs at the end of each semester to attend a transition meeting for planning students' future paths and providing career transition services for students with physical and mental disabilities. After graduation, further consultation is provided to assess how well students are prepared for the workplace, how well they are able to take care of themselves, and what their job expectations are, so that suitable supportive services of employment and career guidance may be given after evaluation. At present, schools in the county have tracked the individual needs and status of each student leaving schools within six months and stored the data in the Special Education Notification Network of the Ministry of Education for future reference. Authorities concerned with disabled students' wellbeing also collect information pertaining to the current status of each student to ensure that everyone in need of employment has continued support after graduation.

Responsible Dep.	Indicator	2020	2030 Target
Education	Tracking rate of employment demand of students with disabilities	100%	100%

Formula: the tracking rate = (# tracked students / # employed students * 100%)



Case interview



Case meeting

5) Sustainable Development Goals and Results

**SDG4 QUALITY EDUCATION**

Ensure inclusive and equitable quality education and promote lifelong learning opportunities for all

**Target 4.6**

By 2030, ensure that all youth and at least x% of adults, both men and women, achieve literacy and numeracy.

Increasing the Proportion of the Literate Population

In implementing the “White Paper towards a Learning Society” and the “Building a Lifelong Learning Society Plan,” Yilan has set up supplementary schools, departments of continuing education, and classes of basic education for adults (including classes for new residents) to promote adult education in the county and maintain the proportion of literate population at 98%; the main abilities to be cultivated include listening, speaking, reading, writing, and calculating. In this way, communication skills of people can be enhanced to expand interpersonal relationships, and people can integrate what they have learned into the modern society and gain basic knowledge to enrich their lives.

As of 2021, there are 38 classes in 15 schools providing educational extension services in Yilan, including one senior high school having an extension department (Nan Oau Senior High School), four junior high schools having supplementary classes (Fu-Shing, Tou-Cheng, Dong Guang, and Suao Junior High Schools) and ten elementary schools having supplementary classes (Jhong Shan, Nan An, Guting, Dongshan, Jiaoxi, Luodong, Tongle, Er-Cheng, Dayin, and Syue Jin Elementary Schools). In 2021, the government has also applied for subsidies from the Ministry of Education for organizing basic education classes for adults (including classes for new residents), with 16 classes opened by eight schools including Li-Ming, Luodong, Gong Jheng, Masai, Nan An, Dali, Longtan Elementary Schools, and Humanity Primary/Junior High School (including 11 classes opened for new residents).

Responsible Dep.	Indicator	2020	2030 Target
Education	Proportion of literate population in Yilan	100%	100%

Formula: the proportion of literate population in Yilan = (literate population/total population of Yilan) * 100%.



Supplementary class at Jhong Shan Elementary School



Supplementary class at Nan An Elementary School

5) Sustainable Development Goals and Results



Target 4.7

By 2030, ensure that all learners acquire the knowledge and skills needed to promote sustainable development, including, among others, through education for sustainable development and sustainable lifestyles, human rights, gender equality, promotion of a culture of peace and non-violence, global citizenship and appreciation of cultural diversity and of culture's contribution to sustainable development.

Taking Steps Towards a Learning Society

Yilan County continues to put the concept of “civil society” into action, aiming to foster development in adult education and progression of civil society with local community colleges. With ideas of lifelong learning, civil society, and social care as core values, the government has made steady progress in managing community colleges. Moreover, in fulfilling development goals set up in the Community College Development Act, the government strives to promote modern citizenship, encourage people to participate in public affairs, assist in local public affairs, strengthen local identity, facilitate local industry development, cultivate local talents, develop local culture and local knowledge, and enhance sustainable development in communities.

The government also aims to cultivate modern lifelong learners who have the 21st century characteristics defined by UNESCO and are skilled in putting their ideas into practice and learning widely in various learning environments. In this way, through governmental support, these learners are able to explore their interactions with the surrounding environment and reflect on life and the environment.

In addition, lifelong learners are expected to be able to anticipate future developments, verify hypotheses, and develop courses by cooperating with teachers in community colleges and using learned knowledge from community colleges to create a new, diverse learning environment. The government endeavors to integrate lessons regarding social services, knowledge in various disciplines, environmental ecology, aesthetics in life, and healthy living, all of which are in line with the three dimensions of autonomous action, social participation, and interactive communication as emphasized in the Curriculum Guidelines of 12-Year Basic Education. These dimensions include nine competency items: “physical and mental wellness and self-advancement,” “logical thinking and problem solving,” “planning, execution, innovation, and adaptation,” “semiotics and expression,” “information and technology literacy and media literacy,” “artistic appreciation and aesthetic literacy,” “moral praxis and citizenship,” “interpersonal relationships and teamwork,” and “cultural and global understanding.”

Responsible Dep.	Indicator	2020	2030 Target
Education	achievement rate of two community colleges in Yilan offering courses each semester	100%	100%

Method of Assessment: The amount of 60 courses offered each semester is used as a standard of evaluation.

5) Sustainable Development Goals and Results

**SDG4 QUALITY EDUCATION**

Ensure inclusive and equitable quality education and promote lifelong learning opportunities for all

**Developing Sustainable Environmental Education**

Since 2020, the Ministry of Education has proposed the New-Generation Environmental Education with "sustainable development" as its core concept, leveraging the solid domestic foundation of environmental education to combine sustainable development goals at home and abroad, implement strategies of transforming school education, and enhance resource integration and interdisciplinary cooperation to realize Education for Sustainable Development (ESD) in the current school system. ESD echoes the content of the Curriculum Guidelines of 12-Year Basic Education, with "literacy" as the core of curriculum development for the self-realization of learners and positive social development. The ministry sets interdisciplinary studies as the main direction of innovation to realize the vision of "developing talent in every student—nurture by nature, and promoting life-long learning."

Therefore, as the education for sustainable development is included in "curriculum development and teaching," one of the main aspects of education promoted by the Yilan County Government, the policies focus on professional training workshops for teachers, curriculum development with local knowledge, and school curriculum optimization. Meanwhile, much emphasis is placed on guiding learners to explore the relationship between learning topics of environmental education in the new curriculum, in response to the needs of being literacy-oriented and featuring interdisciplinary teaching. Therefore, the policies cover six key development points, including overall planning of school environments, curriculum design and development, practice of environmental actions with local resources, partnership development, integration of technology and information tools, and goal-oriented task learning.

In this way, it is expected that the promotion and practice of "Education for Sustainable Development in Schools - Curriculum Development and Teaching" helps stimulate the development and improvement of learners at different stages in "global literacy" and makes them the ideal world citizens leading sustainable development in future generations.

Responsible Dep.	Indicator	2020	2030 Target
Education	proportion of training workshops in sustainable development education	14%	100%

Formula: proportion of training workshops in sustainable development education = (the number of training workshops in sustainable development education/the number of all training workshops) * 100%.



Training programs for sustainable education

5) Sustainable Development Goals and Results



Assisting Students with Disabilities in Adapting to Schools and Improving Learning Quality

In Yilan, as early as the enrollment of students with disabilities, special education teachers invite relevant professionals from the Special Education Resource Center to the school to provide various services, which include assessing the requirements for assistive devices and giving suggestions for related training activities. Next, special education teachers borrow assistive devices from the Special Education Resource Center by application. The devices include mobility and positioning aids, reading and writing aids, communication aids, computer aids, daily life aids, auditory aids, visual aids, and the like. If no suitable assistive devices are available for students, the center will purchase equipment from time to time according to the needs of physically and mentally disabled students every year to reduce the time of students waiting for required assistive devices.

When relevant professionals come to schools to assess the abilities of disabled students or track how the provided training suggestions are implemented, they may also check the use of assistive devices and make adjustments to assistive devices to enhance the learning performance and growth of students with disabilities.

Responsible Dep.	Indicator	2020	2030 Target
Education	target borrowing rate is 95%	94%	100%

Achievement rate = actual borrowing rate / target borrowing rate



Disabled student using a walker



Standing frame provided to train lower limb muscle strength

5) Sustainable Development Goals and Results



SDG5 Gender Equality

Achieve Gender Equality and Empower All Women and Girls



As society becomes more open-minded and gaps in education are bridged, the issue regarding the standing of women in society has gradually been brought under the spotlight. In order to ensure actual gender equality, the rights of women, and to reduce gender discrimination, the Yilan County Government established the “Yilan County Gender Equality Advancement Committee.” The committee is thus tasked with improving the cultural phenomenon of gender inequality. While taking into consideration the pressure modern women face both at home or in the workplace, the Yilan County Government took a five-pronged approach to address personal safety, social welfare, culture and education, employment, and environmental resources. By dividing up the issues and assigning them to relevant departments, the government will be better equipped to provide additional services and promote women’s rights.

Target 5.2

Eliminate all forms of violence against all females in the public and private spheres including trafficking, sexual and other types of exploitation.

Eliminating All Forms of Violence and Establishing a Gender-Based Violence Safety Net

In order to work towards eliminating all forms of violence against women, the Yilan County Government has teamed up with local anti-violence groups to provide multi-faceted educational events that incorporate display advertisement, social media, electronic media, radio programs and other resources. The goal of the educational events is to promote the correct concepts to prevent domestic violence and sexual assault across all ages. Hopefully, women that are victims of gender-based violence will be more willing to reach out, seek help, and actively work towards protecting their own rights. The County Government is also actively working to familiarize its citizens with physical autonomy, acquaintance rape, and digital sexual violence in hopes that they will be able to prevent and reduce the rate of women enduring sexual abuse. The County Government wishes that in the future women will be able to live without fear in a friendly and violence-free environment.

Responsible Dep.	Indicator	2020	2030 Target
Social Affairs	Notification rate of women that report cases of gender-based violence	0.549%	0.8%
	Notification rate of women that report cases of sexual assault	0.06%	0.05%

Methods of assessment: Notification rate = (Reported cases/Total women of Yilan County) *100%

5) Sustainable Development Goals and Results



Target 5.5

Ensure women's full and effective participation and equal opportunities for leadership at all levels of decision-making in political, economic and public life.

Strengthening Gender Equality Governance

In order to facilitate lateral communication between government agencies; promote overall gender equality in the workplace; gather knowledge of various professionals and the government; and effectively utilize the policy programming, planning, consulting, supervising, and resource integration functions of the government; the county government has invited representatives of women groups, women in disadvantageous situations, representatives of sexual diversity, and scholars and experts to join in the highest levels of decision-making to promote sexual equality. This will strengthen the county government's gender equality governance; improve the relationship between the government, non-governmental organizations (NGOs), women's rights organizations, and gender equality advocates; and increase communication with women's organizations within the county.

In the future, there will be 12 meetings related to gender equality and women's rights held annually by the gender equality advancement committee through the three levels of county council procedure system. Gender issues can be divided into five main aspects, including personal safety, social welfare, culture and education, employment, and environmental resources. With these issues included in governmental plans, we can work towards realizing gender equality, eliminating gender discrimination, ensuring gender rights, building a gender friendly city, and providing a gender-equal life in Yilan.

Responsible Dep.	Indicator	2020	2030 Target
Social Affairs	Completion Rate of Gender Mainstreaming Related Meetings	100%	100%

Methods of assessment: Host 12 relevant meetings each year.



First Gender Equality Advancement Committee Meeting in 2021

5) Sustainable Development Goals and Results

**SDG5 Gender Equality**

Achieve Gender Equality and Empower All Women and Girls



Ensuring Equal Opportunities for Participation in Public Policies and Boosting Representation of Both Genders to at Least One-Third of Total Members

There are currently a total of 76 committees in the various county departments and divisions. Of these 76 committees, 55.7% in 2020 have a representation of both genders making up at least one-third of total members. In 2021, that number rose to 71%. The county government further set a goal of reaching 80% by the year 2030. (This goal is set according to the standards of assessment in regards to the efforts of the Executive Yuan in urging municipality, city, and county governments to promote gender equality.)

Currently, there are still 22 committees that are not up to standards, mainly consisting of civil engineering committees. This reason is due to the shortage of women pursuing a career in this field. In the next term, the county government plans to increase the number of women committee members or even set a criteria for the establishment of a committee to include a certain percentage of women representatives.

Responsible Dep.	Indicator	2020	2030 Target
Personnel	Completion Rate of Committees with One-third Women Representatives	55.7%	80%

Formula: Completion Rate = (Number of committees with any gender making up one-third of the total committee members / total committees) * 100%



The county set a goal for 80% of committee's to achieve at least one-third representation of any gender by 2030

5) Sustainable Development Goals and Results



SDG6 Clean Water and Sanitation

Ensure Availability and Sustainable Management of Water and Sanitation for All

Yilan County is rich in water resources. Under its plan of preserving aquatic ecosystems, the county government has enhanced adequate management of wastewater or sewage to improve water quality of rivers. The Yilan County Government has also developed sanitary sewer programs in schools to ensure clean sewers and ditches on campuses. In addition, by introducing relevant regulatory measures, the government implements annual water quality monitoring of water bodies and promotes automatic monitoring of large sources of pollution, ensuring source reduction of river pollution and maintaining Yilan’s water quality.

Target 6.2

By 2030, achieve access to adequate and equitable sanitation and hygiene for all and end open defecation, paying special attention to the needs of women and girls and those in vulnerable situations.

Improving Existing Public Toilets in County-Administered Scenic Areas

To achieve access to adequate and equitable sanitation and hygiene for all, the county has been carrying out renovation of 103 men’s toilets, 261 women’s toilets and 33 accessible toilets in county-administered scenic areas through the funding plan headed “Action Plan for Promoting High-quality Public Toilets and Environmental Beautification – Action Plan for Improving Public Toilets and Upgrading High-quality Public Toilets” introduced by the Environmental Protection Administration. From 2019 to 2021, the county completed renovations of 50 men’s toilets, 107 women’s toilets, and 12 accessible toilets, achieving 48%, 41% and 36% renovation rates. It is projected that a 100% renovation rate will be achieved by 2030.

Responsible Dep.	Indicator	2020	2030 Target
Business and Tourism	Renovation rate of men’s, women’s and accessible toilets	Men’s toilets: 23% Women’s toilets: 15% Accessible toilets: 6%	100%

Formula: Renovation rate of toilets= (Numbers of renovated toilets/total number of toilets in county-administered scenic areas)*100%.



Scenic area public bathroom renovations

5) Sustainable Development Goals and Results



SDG6 Clean Water and Sanitation

Ensure Availability and Sustainable Management of Water and Sanitation for All



Target 6.3

By 2030, improve water quality by reducing pollution, eliminating dumping and minimizing release of hazardous chemicals and materials, halving the proportion of untreated wastewater and substantially increasing recycling and safe reuse globally.

Construction of Sanitary Sewers in Schools to Improve Environmental Sanitation

Household connection rate of sanitary sewers represents an important indicator of modernization in today's countries as well as a manifestation of Yilan County's course toward modernization of environmental protection. Discharging sewage from schools into sanitary sewer systems ensures clean sewers and drainage on campuses, reduces possibility of waterborne diseases, improves quality of environmental sanitation in schools, decontaminates rivers, and reduces annual costs of sewage treatment and administration inefficiency.

Currently, there are 100 schools (including 76 elementary schools and 24 secondary schools) in the county. Depending on the development progress of sanitary sewer systems, the county government conducts connection programs by batch annually for schools where piping systems reach. Afterwards, sewage from schools will be discharged through sanitary sewer systems. From 2012 to 2020, connection programs have been implemented in 27 schools. It is expected that the number of schools connected to sanitary sewer systems will be over 55 by 2030.

Responsible Dep.	Indicator	2020	2030 Target
Education	Completion Rate of Sanitary Sewer Connection in 55 schools	49%	100%

Formula: Completion rate = (actual number of connected schools/ target number of connected schools) * 100%.



The original septic tank was removed and a new sewer system installed

5) Sustainable Development Goals and Results



Enhancing Control on Sources of Pollution to Cut Water Pollution

In order to improve water quality of rivers and reduce water pollution due to pollutant discharge, the county government has continually regulated pollutant discharge, and conducted river interception and water purification. The government also implements relevant regulatory measures, such as announcing water pollution control areas, prohibiting “behavior sufficient to cause water pollution” in water pollution control areas and rivers, including torrents, of the county, and introducing the Self-Government Ordinance of Yilan County for Herbicide Use, to reduce sources of pollution and maintain the water quality of rivers.

To maintain the water quality of rivers, The Yilan County Government conducts periodic water quality monitoring of water bodies, promotes auto-monitoring of water quality of large sources of water pollution, and implements response and management regulations of water pollution incidents. The government formulates “Guidelines of Emergency Response and Joint Defense System for Water Pollution Incidents” and holds relevant response drills. In addition, The government team calls upon water protection volunteers and provides them with related training to conduct on-site activities such as river cleaning.

The table below shows the water quality of rivers in 2020: 71.3% of rivers were clean or mildly polluted, 15.2% of rivers were lightly polluted and 13.5% of rivers were moderately polluted. We expect to reduce the percentage of moderately-polluted rivers to below 10%, the percentage of lightly-polluted rivers to below 10%, and raise the percentage of clean or mildly-polluted rivers to over 80% within 3 years.

Responsible Dep.	Indicator	2020	2030 Target
Environmental Protection	Percentage of polluted parts per total parts of rivers based on River Pollution Index (RPI)	Clean or mildly-polluted rivers: 71.3%	Raise the percentage of clean or mildly-polluted rivers to above 82%
		Lightly-polluted rivers: 15.2%	Reduce the percentage of lightly-polluted rivers to below 15%
		Moderately-polluted rivers: 13.5%	Reduce the percentage of moderately-polluted rivers to be low 3%

Formula: $RPI = 1/4 \sum Si$. In this formula, S_i is the point of “i”, which is the water quality parameter. The number of RPI is between 1 to 10. RPI < 2 represents non or mildly-polluted; $RPI 2.0 < S \leq 3.0$ represents lightly- polluted; $RPI S > 6.0$ represents severely-polluted.

5) Sustainable Development Goals and Results



SDG6 Clean Water and Sanitation

Ensure Availability and Sustainable Management of Water and Sanitation for All



Place: Changshou Berm, Baimi Stream, Su'ao Township, Yilan County

Event: Clean Your Environment In Spite of COVID19



River cleaning by employees from Toyota Yilan and the river patrolling team



River cleaning activity



QA session of environmental knowledge



River cleaning activity

5) Sustainable Development Goals and Results



Promoting Recycling and Reuse of Livestock Manure

To reduce river pollution, improve air quality in rural areas and implement the government policies of livestock manure management, circular economy, and nitrogen recycling, the Yilan County Government has promoted the utilization of livestock manure as resources instead of the previous approaches of treating and regulating it as sewage.

Since the enactment of the Water Pollution Control Act in 1974, livestock manure has been treated and regulated as sewage. Livestock enterprises are required to set up three-stage wastewater treatment systems composed of facilities for solid-liquid separation, anaerobic fermentation, and aerobic fermentation. Among the effluent criteria, biochemical oxygen demand (BOD) is 80 mg/L, chemical oxygen demand (COD) is 450 mg/L, and nitrogen is not regulated. Discharging wastewater in accordance with the criteria into water bodies such as rivers or drainage, however, still causes oxygen deficits, pollution and unpleasant aromas in some river locations. According to the Environmental Protection Administration, livestock manure has a high nitrogen content. A pig, for instance, produces feces containing 20 g of nitrogen daily or 73 kg of nitrogen annually, the amount of which is roughly equivalent to that of a sack of No. 5 Fertilizer (40 kg and 16% nitrogen content per sack) from Taiwan Fertilizer Co. Ltd.. Based on the Taiwanese pig population of 5 million, the annual production of nitrogen amounts to 36,500 tons, which is equivalent to that of 5 million sacks of fertilizer. Livestock manure discharged into rivers is misplaced resources, and should be reused. As the Chinese saying goes “Manure should be kept for one’s own use.” As for global trends in environmental protection, EU countries prohibit both untreated and treated livestock manure from being discharged into water bodies. Livestock manure shall be recycled and reused on fields, or converted into energy through dehydration and combustion. Currently, in main European livestock producing countries (Denmark, the UK and Germany) and Australia and New Zealand, anaerobic digestion of livestock manure has been adopted to produce biogas slurry and biogas residues for fertilization in fields, biogas for generating power, as well as steam and biofuel for powering vehicles.

According to Article 46-1 of Water Pollution Control Measures and Test Reporting Management Regulations, the livestock industry engaged in pig farming shall take measures (including reuse of livestock manure, biogas slurry and biogas residues, and effluent) in the treatment of animal excreta for recycled use. Pig farms keeping more than 2,000 pigs shall achieve 10% manure recycled use by December 27, 2027. Pig farms keeping 20 to 2,000 pigs shall achieve 10% manure recycled use by December 27, 2031. (Only one farm in the county keeps more than 2,000 pigs, and the remaining farms keep no more than 1,999 pigs.). Therefore, the 2030 target for recycling and reusing livestock manure is set at 10%.

Responsible Dep.	Indicator	2020	2030 Target
Agriculture	Percentage of Use of Biogas Slurry	2.38%	10%

Formula: Percentage of use of biogas slurry = (amount of fertilization with biogas slurry/ total wastewater generated from pig farms containing over 200 pigs in Yilan)*100%.

5) Sustainable Development Goals and Results



SDG6 Clean Water and Sanitation

Ensure Availability and Sustainable Management of Water and Sanitation for All



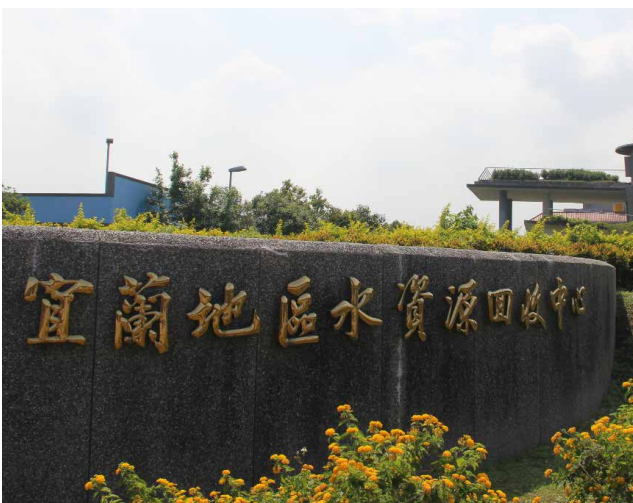
Improving Water Quality, Treat and Safely Reuse Wastewater

Sanitary sewers are indispensable public services in terms of addressing issues of urban sewage discharge and river pollution, and further improving the quality of residents' living environments. It also serves as an indicator of urban life quality and culture in modern countries. In respect to the abovementioned, Yilan County has been proactively promoting construction of sanitary sewers recently, in order to improve the quality of residents' living environment.

The county has planned the construction of sanitary sewer systems in Yilan City, Luodong Township, Jiaoxi Township, Toucheng Township, Su'ao Township, and Sanxing Township. Among them, sanitary sewer systems in Yilan City and Luodong Township are currently under construction. The proliferation rate of sanitary sewers has increased from 14.8% in 2011 to 33.2% in 2020. In order to continually expand sanitary sewer systems in the county, the government successfully applied to the central government for funding the construction of a sanitary sewer system in Su'ao Township. The construction project is divided into three phases from 2022 to 2041. Upon completion, it is expected to complete the connection for 10,000 households and increase the proliferation rate by 5.8%.

Responsible Dep.	Indicator	2020	2030 Target
Water Resources	Proliferation Rate of Sanitary Sewers	33.2%	41.2%

Formula: Connected households average population/ total population of the county (based on the Fifth Stage of Sanitary Sewer Construction Plan (revised)).



Yilan Water Resources Recycle Center



Luodong Water Resources Recycle Center

5) Sustainable Development Goals and Results



Target 6.6

By 2030, protect and restore water-related ecosystems, including mountains, forests, wetlands, rivers, aquifers and lakes.

Environmental Planning for Yilan’s Mountains and Waterways

Apart from beautiful mountains and waters, large forests with extraordinary carbon capture ability and water storage capacity, and rich water resources including hot and cold springs and groundwater have long supported daily life on the Lanyang Plain. Under the “National Spatial Plan,” land is demarcated into functional zones based on characteristics of land resources and for the purpose of environmental conservation and management. Environmentally sensitive areas located in or neighboring mountain range conservation belts, river channels, key coastlines and river mouth wetlands shall be demarcated as environmental conservation zones type 1 and 2. Protected land or land for conservation in urban planning areas shall be demarcated as environmental conservation zone type 4.

To further protect and preserve natural environments and resources, the “Spatial Plan of Yilan County,” in compliance with the principles of demarcating functional zones regarding environmental conservation zones under the National Spatial Plan, instructs the demarcation of functional zones under the third phase of the National Spatial Plan. Areas that meet the certain conditions are demarcated as environmental conservation zones. In particular, areas with important water resources are demarcated as environmental conservation zones type 1. Currently, the methods of assessing the Spatial Plan of Yilan County is based on the ratio of the actual area to the demarcated area of conservation zones on functional zoning maps published under the second phase of the National Spatial Plan. The target of this spatial plan is to retain 100% of such area of conservation zones on functional zoning maps published under the third phase of the National Spatial Plan. However, the actual area of demarcated functional zones is likely to be subject to central government policies. Therefore, the target of the project mentioned will be adjusted and confirmed in accordance with the area of the conservation zones on the functional zoning maps published under the third phase of the National Spatial Plan in 2025.

Upon the completion of the demarcation of functional zones, prohibition and limitation clearly expressed will be executed to conserve the natural environments of mountains and waterways under the regulations and relevant land use regulations of National Spatial Planning Act and the land use directions under the National Spatial Plan.

Responsible Dep.	Indicator	2020	2030 Target
Construction	Area of Environmental Conservation Zones (Type 1, 2, 3, and 4)	0% (Demarcation unbegun in 2020)	100% (based on the area of conservation zones on the functional zoning maps published under the third phase of the National Spatial Plan.)

5) Sustainable Development Goals and Results



SDG6 Clean Water and Sanitation

Ensure Availability and Sustainable Management of Water and Sanitation for All



Target 6.b

Support and strengthen the participation of local communities in improving water and sanitation management.

Promoting Sewage Purification in the Readjustment Areas of Rural Communities

To promote sewage purification in readjustment areas of rural communities, Yilan County has proactively conducted household connection programs and the construction of sewage treatment facilities. Currently, we have completed the connection program for 197 households in Dayin Community, Sanxing Township and Alancheng Community, Yuanshan Township and set up two sewage treatment facilities. In addition, a land readjustment program in the rural community of Wanshan Community, Dongshan Township is in progress and is expected to be completed at the end of March 2022. We expect to complete the connection program for approximately 353 households and two sewage treatment plants in 2030, achieving sewage purification and meeting the effluent criteria.

Responsible Dep.	Indicator	2020	2030 Target
Land Administration	Household Connection Rate Based on the Readjustment Plan	56% (Completion of connection program for 197 existing households in Dayin area, Sanxing Township and Alancheng area, Yuanshan Township and the construction of two sewage treatment facilities)	100% (Expected to complete connection programs for approximately 353 households and the construction of two sewage treatment plants)

Formula: Proliferation rate of sanitary sewers = (# connected households/ # total households)*100%.



Sanitary sewer system under construction in Dayin Community, Sanxing Township



Sewage treatment facility in Dayin Community, Sanxing Township

5) Sustainable Development Goals and Results



SDG7 Affordable and Clean Energy

Ensure Access to Affordable, Reliable, Sustainable and Modern Energy for All



Due to the increasingly severe risks that global warming poses, the Yilan County Government has been investing in the development of renewable energy. Among the five types of energy, namely hydropower, biomass energy, wind power, solar power, and geothermal power, the Yilan Government has decided to focus on geothermal power and photovoltaic solar energy, considering the environments and natural resources available in the region. The government aims to provide citizens with a stable supply of energy by increasing energy self-sufficiency and reducing dependence on fossil fuel energy, achieving Yilan's goal of environmental sustainability.

Target 7.2

By 2030, increase substantially the share of renewable energy in the global energy mix.

Continued Investment in Green Energy

Environmental sustainability has been the core value in our continued investment in green energy in Yilan. After assessing the natural resources available in Yilan, the County Government has decided to focus on the development of geothermal power and photovoltaic solar energy.

In terms of geothermal power development, Yilan County has completed its project to build, expand, alternate, rebuild, operate, and transfer (BOT+ROT) the geothermal power plant in Qingshui, Yilan. In the future, Yilan will continue following the targets and strategies on geothermal power development established by the central government and investing in early-stage geological drillings. Our goal is to explore potential geothermal fields in the country and foster the development of the industry.

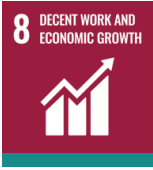
As for photovoltaic solar energy, the installation of solar panels on the rooftops of public facilities, such as schools and governmental agencies, has been widely recognized. The installed solar panels have been further utilized through rental bidding, and the county government has expanded the policy by encouraging citizens to install solar panels on the rooftops of private properties. In addition, the government has run a public tender to select businesses to operate and commercialize landfills that have been closed. The tender is expected to install photovoltaic systems in potential rooftop fields for green energy, Luodong landfill, and Wujie old landfill. As a result, Yilan has seen a rapid growth in its installed solar power capacity.

In addition, the county government has been organizing training programs and workshops for renewable energy education. Through dialogues and exchange of industry practice between the public and private sectors, Yilan County Government is determined to foster the development of the green energy industry and achieve environmental sustainability.

Responsible Dep.	Indicator	2020	2030 Target
Business and Tourism	Total installed capacity for renewable energy	60MW	140MW

Methods of assessment: Installed capacity for solar power increased by 25MW in 2021 in Yilan, achieving 85MW in total. In 2022, the increase is expected to be 5MW, with total installed capacity being 90MW. In 2023, the increase will be 15MW (including 5MW annual growth for solar energy and a 10MW contribution from the completed landfill), totaling 105MW. A stable annual growth of 5MW is expected between 2024 and 2030, making the total installed capacity 140MW by 2030.

5) Sustainable Development Goals and Results



SDG8 Decent Work and Economic Growth

Promote Sustained, Inclusive and Sustainable Economic Growth, Full and Productive Employment and Decent Work for All



Employment rate and economic growth has long been a focus of the Yilan County Government. To boost economic growth, Yilan Science Park has been extending business invitations to high tech companies that pollute less. Large job expos have been held to provide more job opportunities. Meanwhile, to ensure access to decent work, the government has endeavored to help those unemployed or physically/mentally challenged through training of practical skills.

Target 8.3

Promote development-oriented policies that support productive activities, decent job creation, entrepreneurship, creativity and innovation, and encourage the formalization and growth of micro-, small- and medium-sized enterprises, including through access to financial services.

Local Small Business Innovation Research

Local Small Business Innovation Research is a program that aims to revitalize industry development, increase employment rate, encourage entrepreneurship, and create an environment suitable for living and working. The three-pronged program integrates production, living, and ecosystem to formulate economic development strategies and create added value to the industry through technology, innovation, and value selling.

Due to a lack of job opportunities, Yilan County faced a great challenge in keeping young people in the local labor market. As a result, the county saw a decline in its primary and secondary industries. A lack of guidance, support, and industry upgrade plans made it impossible for the government to increase employment rate and boost economic growth. Within this context, the Local Small Business Innovation Research program has been proposed to foster industry development, create job opportunities, increase the ratio of the employed population, drive overall economic growth in Yilan, and provide comprehensive support, upgrade plans, and resources to the primary, secondary, and tertiary sectors.

In 2020, a total of 36 applications were submitted, and 15 (businesses) were approved and signed contracts with the county government, contributing a positive impact to the local economy. In addition, businesses receiving subsidies on R&D were able to invest in equipment and relevant expenses, which in turn boosted growth of the entire supply chain. This program was expected to increase employment, lower the unemployment rate, and ultimately contribute to social stability.

Responsible Dep.	Indicator	2020	2030 Target
Business and Tourism	# SBIR contracts signed (per year)	15	22

Methods of assessment: Following instructions from the central government, the Yilan County Government is increasing its number of SBIR contracts signed per year. However, an estimated increase of one to two contracts every three years is scheduled to avoid a dilution of the subsidies allocated to applicants.

5) Sustainable Development Goals and Results



Yilan Science Park to Extend Business Invitations

To boost local development, the Yilan County Government has been extending business invitations to attract investment that will help elevate living standards in Yilan. The government has been reviewing lands for industrial use and loosening the standards of environmental impact assessments. In addition, investment focus has been put on five industries, including biotechnology, precision machinery, telecommunication, photovoltaic parts, and green energy. Projects and policies that aim to attract more business investments have been formulated, such as construction of new infrastructure and investment opportunities in emerging industries. These projects and policies are expected to drive a series of external investments. To build a better investment environment and to better support investors, the Industrial Development and Investment Promotion Committee was instructed by the county government to provide a one-stop service for investors. The stop provides all services needed for investment processing and has helped create more job opportunities. In the future, the county government will strengthen communication horizontally and vertically and instruct the committee to further attract external investment. This will better promote investment opportunities in Yilan, attract investors to consider conducting business locally, and ultimately elevate local living standards.

By the end of September 2021, the occupancy rate of lands in Yilan Science Park was 31.65% (10.7 hectares rented/33.82 hectares total lands for industrial use). The occupancy rate is expected to reach 100% by 2030.

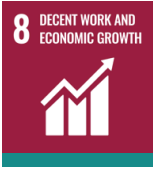
Responsible Dep.	Indicator	2020	2030 Target
Business and Tourism	Occupancy rate of lands in Yilan Science Park	24.5%	100%

Formula: Occupancy rate = (lands rented/total lands for industrial use)*100%.



Business invitation events for Yilan Science Park

5) Sustainable Development Goals and Results



SDG8 Decent Work and Economic Growth

Promote Sustained, Inclusive and Sustainable Economic Growth, Full and Productive Employment and Decent Work for All



Target 8.5

By 2030, achieve full and productive employment and decent work for all women and men, including for young people and persons with disabilities, and equal pay for work of equal value.

Job-Matching Service

To increase local employment rate and help businesses cope with labor shortage, the county government has integrated internal and external resources to provide employment service. This includes job service counters, as well as large, small, and single job events. In addition, to assist laborers who have not been able to acquire stable jobs, the government has proposed several employment promotion plans, such as career personality and aptitude assessment, corporate visits, incentives for young laborers who work in the same place for a certain period of time, and subsidies for young laborers applying for technician certificates.

The unemployment rate in Yilan County was 3.9% in 2020, and the labor force participation rate was 61.6%. For H1 2021, the unemployment rate was 4.0% and the labor force participation rate was 60.6%. As the local job market has been severely impacted by COVID-19, Yilan's future is expected to be even more challenging and policy reviews must be taken on a regular basis to solve problems effectively. The Yilan County Government is dedicated to creating a livable and workable county by following UN Sustainable Development Goals and providing decent work for all citizens by 2030.

Responsible Dep.	Indicator	2020	2030 Target
Labor Affairs	Local unemployment rate	3.9%	Avg. between 2021 and 2030 to be 3.8% - 3.9%
	Local labor force participation rate	61.6%	Avg. to be 61.4% - 62.4%

Formula: (1) Unemployment rate = (unemployed/labor force)*100%. (2) Labor force participation rate = labor force/total population 15 years old and over)*100%.

5) Sustainable Development Goals and Results



在地廠商聯合徵才

Local job applicants



A livable and workable county

Incentives for stable employment

5) Sustainable Development Goals and Results



SDG8 Decent Work and Economic Growth

Promote Sustained, Inclusive and Sustainable Economic Growth, Full and Productive Employment and Decent Work for All



Providing Job Services to People with Disabilities

To help disadvantaged citizens develop skills and obtain jobs, the county government has proposed several employment promotion plans for persons with disabilities, including a fixed ratio of employment guarantee, vocational rehabilitation case management service, and job training. These plans aim to enable disadvantaged citizens to utilize what they have learned or are skilled at, and in turn find their places in the job market and achieve self-fulfillment.

In 2020, the Yilan County Government assisted 153 persons with disabilities in total, among whom 121 acquired jobs via referral from the government. The employment rate for those receiving the referral was 79.08%. Due to the impact from COVID-19 in H1 2021, the county government has assisted 114 persons with disabilities in total, among whom 61 were successfully employed. The government will continue its effort in ensuring stable employment for citizens with disabilities by providing relevant services.

Responsible Dep.	Indicator	2020	2030 Target
Labor Affairs	Employment rate of persons with disabilities receiving referral	79.08%	Avg. employment rate between 2021 and 2030 to be 80%

Formula: Employment rate of persons with disabilities receiving referral = (Employed persons with disabilities receiving referral / persons with disabilities receiving referral) * 100%.



Job training for persons with disabilities



Job assistance to persons with disabilities

5) Sustainable Development Goals and Results



Target 8.6

Substantially reduce the proportion of youth not in employment, education or training.

Increasing Employment Rate for Citizens Through Skill Training

To increase the local employment rate and match training results with market demand, the Yilan County Government has planned a series of job training for the unemployed based on demand and provision of the job market. In addition, the government also provides vocational training courses that focus on practical skills needed in the industry. By encouraging citizens to enroll for the training, the government aims to help them develop vocational skills needed by businesses and increase their competitiveness in the job market.

In 2020, 188 people attended training courses for the unemployed, and 151 of them successfully acquired jobs after the training, with an employment rate of 80.32%. In 2021, 239 people attended the training. The Yilan County Government will continue its provision of job services to significantly reduce the number of young citizens who are unemployed, dropping out, or unskilled.

Responsible Dep.	Indicator	2020	2030 Target
Labor Affairs	Employment rate for the unemployed after vocational training	80.32%	Avg. employment rate after vocational training for the unemployed to reach over 82% between 2021 and 2030

Formula: Employment rate for the unemployed after vocational training = (total employed after vocational training/total attending vocational training)*100%.

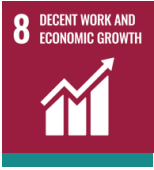


Vocational training for catering service



Skill training for those starting their own businesses

5) Sustainable Development Goals and Results



SDG8 Decent Work and Economic Growth

Promote Sustained, Inclusive and Sustainable Economic Growth, Full and Productive Employment and Decent Work for All



Target 8.9

By 2030, devise and implement policies to promote sustainable tourism that creates jobs and promotes local culture and products

Sustainable Development of Aboriginal Industry

To boost the development of aboriginal industry, Yilan County Government has held a series of entrepreneurship contests, where aboriginal people compete to create diversified products with cultural elements. In particular, products with business potential are selected, and guidance is provided to their creators to assist them in developing marketing strategies and joining sales channels.

In addition, the county government has held training on business management to assist companies, enterprises, and businesses founded by aboriginals in enhancing core capabilities (such as marketing, operation, product design, packaging). The training is expected to further improve product quality and visibility. The county government will also assist aboriginals in maintaining a stable operation of the sales platform and providing guidance to aboriginal business owners, with a goal of creating more job opportunities with stable incomes for aboriginal citizens. Guidance and subsidies will be provided continuously as long as government funds allow.

Responsible Dep.	Indicator	2020	2030 Target
Civil Affairs	Achievement rate of Yilan Aboriginal Entrepreneurship Competition	100%	100%
	# Aboriginal-owned companies, enterprises, and businesses receiving guidance and training	10	Accumulative 60
	Achievement rate of persons receiving training and guidance	100%	100%

Formula: (1) Achievement rate of the entrepreneurship competition = (# application received/# application expected)*100%.
 (2) Achievement rate of persons receiving training and guidance = (# persons guided/trained/# persons expected) *100%.



Lanyang Aboriginal Creativity Museum | Holiday Market in Lanyang Aboriginal Creativity Museum

5) Sustainable Development Goals and Results



SDG9 Industry, Innovation, and Infrastructure

Build Resilient Infrastructure, Promote Inclusive and Sustainable Industrialization and Foster Innovation



Sound infrastructure lays the cornerstone for mature urban development. The Yilan County Government has formulated plans for more resilient infrastructure, such as rainwater sewers, river improvement, river management, local drainage systems, and road improvement. It is the government's goal to provide all citizens with well-built infrastructure and to pass on positive results to the next generation.

Target 9.1

Develop quality, reliable, sustainable and resilient infrastructure, including regional and transborder infrastructure, to support economic development and human well-being, with a focus on affordable and equitable access for all.

Construction of Rainwater Sewers

Rainwater sewers are a type of sewage system that conveys rainwater. It is responsible for the collection and discharge of rainwater runoff. After the surface runoff collection system collects rainfall, the rainwater is conveyed through pipelines and stored at the retention basins. Finally, water in the retention basins is discharged into the river or sea through pump stations or watergates downstream.

Rainwater sewers act as important flood prevention facilities in urban areas, and the completion rate of rainwater sewers is an important indicator of national and urban development. In response to climate change, Yilan County Government has been proactively seeking subsidies from the central government to build rainwater sewers in 15 of the urban planning areas in the county. The plan is expected to increase the capacity of the Yilan's sewage system, reduce flooding impacts during heavy rainfalls, and ensure the safety of the life and properties of all citizens.

Responsible Dep.	Indicator	2020	2030 Target
Water Resources	Completion rate of rainwater sewers	68.61%	72.61%

Formula: An annual increase of 0.4% is expected and is subject to change based on annual subsidies allocated from the central government.



Maintenance of rainwater sewers

5) Sustainable Development Goals and Results



SDG9 Industry, Innovation, and Infrastructure

Build Resilient Infrastructure, Promote Inclusive and Sustainable Industrialization and Foster Innovation



Improving Dongshan River to Increase Protection Against Flooding

Dongshan River is an important sewage system for regions south of Lanyang River in the county. Dongshan River originates in Xinliao Mountain and flows through Dongshan and Wujie, its tributaries spanning across Luodong, Dongshan, and Wujie. As the river flows from mountainous areas to the plains, its velocity slows down, and sediment deposition leads to an increase in the height of the river bed. Together with the low-lying river mouth, the downstream area has frequently suffered from floods during heavy rainfalls. In this regard, the Yilan County Government has dedicated its resources to the improvement plan of Dongshan River.

The improvement plan of Dongshan River is divided into three stages. The first stage of the plan was completed in 1982, where the focus was placed on improving the mainstream and upstream tributaries. The second stage was implemented between 2007 and 2019, where the emphasis was on the drainage and discharge of downstream tributaries. The third stage was started in 2020 to review the flood capacity of Dongshan River, the rectification of Wujie Anti-tide Gate, and drainage systems in each tributary.

The review of Dongshan River's flood capacity was completed in November 2020, and the county government is now working on the design of the reinforcement of Wujie Anti-tide Gate and revision of the 16 drainage improvement plans for the tributaries of Dongshan River. The project is expected to increase the region's overall disaster resilience.

Responsible Dep.	Indicator	2020	2030 Target
Water Resources	1. Implementation rate of the review of Dongshan River's flood capacity	33.33%	100%
	2. Implementation of the rectification of Wujie Anti-tide Gate		
	3. Implementation of the 16 drainage improvement plans		

Formula: 100% is defined as the completion of all three projects.



Course of Dongshan River



Rendered picture of the rectified Wujie Anti-tide Gate

5) Sustainable Development Goals and Results



Maintenance of Water Conservancy Facilities in Yilan

The special hydrological regime in Taiwan makes the island prone to flooding during typhoons and heavy rainfalls. This has threatened the life and property of its people. Therefore, regular maintenance of river embankments is especially important for Taiwan. In addition to the expansion of width and depth of cross-sections for flooding, maintenance of the embankments should be conducted regularly and any damages reported to authorities concerned should be repaired immediately. Lack of maintenance can cause breaches in the prevention of floods.

The county government has created a series of maintenance levels for river and drainage system management based on the frequency of usage and regional needs. Rivers and regional drainage systems that are essential or relevant to the living standards of citizens are categorized as Level 1, where the frequency of weeding is once every two months. Rivers and regional drainage systems in remote areas or with a lower frequency of usage are categorized as Level 2, where weeding is conducted once every four months. The level and scale of maintenance are also adjusted based on seasonal changes and flood periods. In addition, the protection slopes and turfs of access roads, cycling trails, and provincial highways that are less than 30 meters from the river should be kept at a height of no more than 30cm so as not to interfere with flood discharge. Moreover, the river courses, slopes in front of the embankments, and the roads after the embankments as well as access roads must be kept clean and kempt.

Responsible Dep.	Indicator	2020	2030 Target
Water Resources	Achievement rate	100%	100%

Formula: Achievement rate = (Area covered/total area of 10 mn square meters)*100%.



Access roads to the water conservancy facilities are kept clean

5) Sustainable Development Goals and Results



SDG9 Industry, Innovation, and Infrastructure

Build Resilient Infrastructure, Promote Inclusive and Sustainable Industrialization and Foster Innovation



Results of the Road-smoothing Project

To ensure the safety of road users, Yilan County Government has reviewed its road condition regularly. In particular, after each natural disaster, roads with torn pavements, cracks, damages, or uneven surfaces are placed on the annual or post-disaster maintenance list as they pose threats to road users. The listed roads will be repaved if certain criteria in the examination report are met. Before repaving begins, government agencies and businesses responsible for the pipelines underground will examine the pipelines together and coordinate with each other to ensure the paved road surfaces are even and smooth. Smooth roads constitute a cityscape that centers around humanity, biodiversity, and environmental aesthetics. The policy sets the cornerstone for a human-oriented city and its sustainable development that boasts high quality, reliable, sustainable, and resilient infrastructure.

The road-smoothing project of Yilan is categorized into two parts: regular examination and maintenance, where broken roads are repaired immediately; and annual repaving, where roads meeting certain standards in the assessment report will be listed in the annual repaving plan and roads damaged by disasters will be listed for repair or repaving. The project aims to ensure the safety of road infrastructure.

Responsible Dep.	Indicator	2020	2030 Target
Transportation	Total length of roads improved (m)	57,633 meters	An increase of 30% compared to the 2020 basis



Roads improved via the road-smoothing project

5) Sustainable Development Goals and Results

**Target 9.4**

By 2030, upgrade infrastructure and retrofit industries to make them sustainable, with increased resource-use efficiency and greater adoption of clean and environmentally sound technologies and industrial processes, with all countries taking action in accordance with their respective capabilities.

Subsidizing the Improvement of Industrial Boilers in Yilan

Due to the rapid growth of the manufacturing industry and climate change, poor air quality has become a common problem. To reduce air pollution, the Yilan County Government proposed the Subsidizing Plan for Industrial Boiler Improvement in Yilan between 2018 and 2020 to obtain subsidies from the Ministry of Economic Affairs. The plan provided subsidies to encourage businesses to use less polluting gas fuels or diesel instead of traditional coal fuels or bunker oil that produced excessive pollutants. As a result, boilers in Yilan now produce fewer air contaminants, and better fuels are now being used, contributing to better air and environmental quality.

Currently, listed boilers running on bunker oils in the county is 58. In 2020, 55 of the listed boilers were upgraded, with another completed in 2021. The entire improvement plan is expected to be completed by 2022.

Responsible Dep.	Indicator	2020	2030 Target
Business and Tourism	Improvement rate	94%	100%

Formula: Improvement rate = (# Businesses receiving subsidies/# listed boilers running on bunker oils)*100%.

5) Sustainable Development Goals and Results



SDG10 Reduced Inequalities

Reduce Inequality Within and Among Countries



In order to guarantee the employment equality of county citizens, the county has promulgated multiple labor laws and gender equality laws and carried out scheduled and unscheduled labor inspections to ensure their implementation, reduce unreasonable, improper, or unequal treatment between employers and workers, and avoid employment discrimination due to gender and age.

Target 10.3

Ensure equal opportunity and reduce inequalities of outcome, including by eliminating discriminatory laws, policies and practices and promoting appropriate legislation, policies and action in this regard.

Promulgation of Labor Laws

Unfamiliarity with labor laws and lack of gender equality awareness are the main reasons for gender employment discrimination within companies and by citizens of the county. Therefore, it is necessary to strengthen the advocacy of labor equality laws to eliminate all gender-based employment discrimination caused by unfamiliarity with the laws and regulations.

Yilan County also organizes gender equality law seminars and publicity sessions, where we invite experts, scholars, county enterprises, and workers in the county to discuss relevant issues. There were 3 gender equality law seminars and publicity sessions in 2021, accounting for 35% of the overall labor law seminars and publicity sessions. The follow-up will annually increase the prevalence rate until it reaches 50%.

Responsible Dep.	Indicator	2020	2030 Target
Labor Affairs	Promulgation Ratio of Labor and Gender Equality Laws	30%	50%

Formula: Advocacy ratio = (Advocacy of Gender equality Law Announcement Sessions/Annual Labor Law Announcement Sessions) * 100%.



Promulgation of labor laws

5) Sustainable Development Goals and Results



Conducting Gender Equality Labor Inspections

In addition to protecting and safeguarding the rights and interests of workers, labor inspections also enhance the company's self-management skills, reduce the occurrence of labor disputes, and create a high-quality workplace environment for workers. Therefore, conducting labor inspections of gender equality projects not only confirms which businesses meet pertinent legal requirements but also gives them appropriate administrative guidance and advice.

In 2020, 100 inspections were carried out under the Gender Equality in Employment Act, with the achievement rate reaching 100%. By the end of September 2021, 70 inspections had already been conducted. In the future, inspections will be carried out more frequently and with a higher level of rigour. Inspections will be expanded from 2022 to 2030. Including the public sector as the subject of inspection, Yilan County will continue its efforts to reduce inequality and ensure that all workers are protected.

Responsible Dep.	Indicator	2020	2030 Target
Labor Affairs	Gender Equality in Employment Achievement Rate	100%	100%

Formula: Achievement rate = (number of items checked for Gender Equality in Employment Act/number of items for annual planned average checks) * 100%.

Increasing the Reinstatement Rate of Workers in the Unpaid Parental Leave System

In the past, these laborers were mostly family caregivers who were obligated to leave the workforce to see to the needs of their family members. The result of having to make such a decision, however, is a significant hampering of their future career development and economic security, especially as they become senior citizens. It furthermore exacerbates employment inequality. Facing the issue of a declining birthrate, it is even more necessary to build a friendly reproductive workplace environment that reduces the barriers for workers to return to the workplace after being suspended from work.

Yilan County has also continued to cooperate with the Labor Insurance Bureau of the Ministry of Labor to handle the support measures for the reinstatement of female workers in the unpaid parental leave system. Every month it checks in on the reinstatement status of workers after the 6-month leave period and writes letters to enterprises to provide necessary assistance, with a care rate of 90%. According to the survey on the number of applications for unpaid parental leave in Yilan County, the rate of reinstatement for the period of stay without pay was approximately 40% in 2020 and 30% as of September 2021. Yilan County will continue supporting advocacy, inspection, and assistance policies in order to reach a reinstatement rate of 60% by 2030.

Responsible Dep.	Indicator	2020	2030 Target
Labor Affairs	Reinstatement Rate of Workers in the unpaid parental leave system	40%	60%

Formula: the rate of reinstatement of workers after parental suspension = (number of reinstatements after 6 months/number of applicants for parental leave) * 100%.

5) Sustainable Development Goals and Results



SDG11 Sustainable Cities and Communities

Make cities and human settlements inclusive, safe, resilient, and sustainable



In order to build sustainable cities and communities, Yilan County has proposed a number of policies such as increasing the scope of public transportation, preserving local cultural heritage, improving handicap access in public buildings, establishing a disaster prevention system, and promoting the rezoning of rural communities. Also, under the National Spatial Planning scheme, the general space development plan focuses on the idea of "making both urban and rural areas more distinctive" and promotes community development to create a new and improved Yilan.

Target 11.2

By 2030, provide access to safe, affordable, accessible and sustainable transport systems for all, improving road safety, notably by expanding public transport, with special attention to the needs of those in vulnerable situations, women, children, persons with disabilities and older persons.

Encouraging the Purchase of Accessible Buses

In order to help the elderly, people with limited mobility, and the general public gain access to public transportation, Yilan County encourages merchants to replace aging buses with handicap-accessible ones, in cooperation with its policy.

There are currently 138 buses in the county's urban areas, of which 64 are Class A low-floor large buses, 11 are Class B medium buses equipped with wheelchair lifts, and 4 minibuses with barrier-free equipment. The total number of accessible buses is 79, making a ratio of 57.2% buses being accessible. The county government will continue to encourage merchants to replace buses with accessible ones to increase the rate of accessible buses to 80% in order to improve service and provide basic civil services to the elderly and other disadvantaged groups.

Responsible Dep.	Indicator	2020	2030 Target
Transportation	Ratio of accessible buses	56%	80%

Formula: Ratio of accessible buses=(number of accessible buses/total number of city buses)*100%

5) Sustainable Development Goals and Results



Increasing Public Transportation System Coverage

The 233 villages and 12 townships in Yilan County are currently all covered in the bus routes. Transportation costs are low and it is affordable and relatively safe for everyone to use. However, due to the large area and sparse population of the county, the size and population of each township and village differ greatly. Based on the current operation model, occupancy rates for Class A buses are low. To improve occupancy rates, the current plan is to revise Class B buses and taxi buses for public use and increase system coverage to meet residents' demand by allowing for the three transportation methods of bus, minibus, and Happy Taxi Bus to cover the same routes.

The county's first taxi bus route, Yellow 1, has been in operation since December 2020, and continuous improvements have been made to improve service standards and lay a solid foundation for future implementation of taxi bus routes. In addition, in order to improve convenient access to transportation for local citizens, Happy Shuttle Buses are currently in operation in Wujie Township and Su'ao Township.

As of 2021, the county's public transportation coverage rate is around 90%. The county will continue to review and adjust according to the carrying capacities of different public transportation methods as well as review bus route service quality to increase coverage rate.

Responsible Dep.	Indicator	2020	2030 Target
Transportation	Public transport coverage rate	85%	93%

Formula: Coverage rate= (number of addresses in 500m radius of bus stops/ total number of addresses in county) *100%



The county's first taxi bus route, Yellow 1 | Class B medium buses equipped with wheelchair lifts

5) Sustainable Development Goals and Results



SDG11 Sustainable Cities and Communities

Make cities and human settlements inclusive, safe, resilient, and sustainable



Creating Comfortable Bus Stop Environments

As Yilan has a rainy climate, in order to prevent people from waiting for buses while exposed to inclement weather, bus stops should function as a rain shelter and be able to provide relevant bus information while serving as a safe, convenient, and comfortable waiting space.

There are more than 2000 bus stops throughout the county and about 233 shelters, so the proportion of stops with shelters is about 12%. In 2021, 14 bus shelters will be completed for a total of 247, for a ratio of 12%. In the future, the government will continue to improve waiting comfort so that by 2030, there will be approximately 500 shelters built, for a total of 25% of bus stops doubling as shelters.

Responsible Dep.	Indicator	2020	2030 Target
Transportation	Bus shelter ratio	12%	25%

Formula: Bus shelter ratio= (shelter number/total bus stops)*100%



New bus pavilions

5) Sustainable Development Goals and Results



Five Major Transfer Stations Boosting Day-to-Day Convenience

Because Yilan County covers a vast area from north to south, five major transfer stations have been set up to improve convenience of public transportation across the various regions. From north to south, they are Wushigang Transfer Station, Jiaoxi Transfer Station, Yilan Transfer Station, Luodong Transfer Station, and Su'ao Transfer Station. These stations serve as transfer centers for inter-city and intra-county railways, coach buses, and free township and city buses. In addition, the county public transit system can be divided according to frequency of use by the public into main routes, daily routes, and tourism routes. The main routes mainly follow Provincial Highway No.9 and connect various townships, while daily routes are centered in transfer stations and radiate outward from there, providing service deep into the country, while tourism routes bring passengers from towns to various sightseeing spots.

Responsible Dep.	Indicator	2020	2030 Target
Transportation	Wushigang Transfer Station Construction Progress	100%	100%
	Jiaoxi Transfer Station Construction Progress	100%	100%
	Yilan Transfer Station Construction Progress	39.5%	100%
	Luodong Transfer Station Construction Progress	31%	100%
	Su'ao Transfer Station Construction Progress	100%	100%

Note: Yilan and Luodong transfer stations serve 8 million passengers a year. In order to improve service quality and provide passengers with a convenient and comfortable waiting space, new transfer stations are being built. The original stations will continue to be used until construction is complete. Construction will not affect service capacity of transfer stations.



Yilan Transfer Station

5) Sustainable Development Goals and Results



SDG11 Sustainable Cities and Communities

Make cities and human settlements inclusive, safe, resilient, and sustainable



Improving Accessible Facilities in Existing Public Buildings

Due to the laws and regulations of the time, accessible facilities in public buildings that obtained construction licenses before July 2008 do not meet current requirements. In order to enable people with disabilities to be able to do government or private business and spend leisure time in a free, equal, and dignified manner, improving accessible facilities is necessary and effective.

To improve convenience and safety for people with limited mobility in Yilan County, as well as in response to an aging society and to meet the needs of those with physical and mental disabilities, the elderly, pregnant women, etc., it is important to enhance the accessibility of public buildings. According to the county's public building accessibility classification, phasing, zoning improvement implementation plan, and existing public building accessibility replacement improvement plan operating procedures and principles, improving the county's existing public buildings' accessible facilities will ensure the provision of high-quality services and comply with relevant regulations and provide safe and feasible transportation networks and public spaces for all, carrying out the vision of sustainable transportation for convenient communities.

Responsible Dep.	Indicator	2020	2030 Target
Economic Affairs	Improvement cases in existing public buildings	100%	100%

Calculated based on number per year as stipulated by the central government.



Restroom with improved accessibility



Parking spots with improved accessibility

5) Sustainable Development Goals and Results



Target 11.4

Strengthen efforts to protect and safeguard the world's cultural and natural heritage.

Sustainable Cultural Preservation and Revitalization

Yilan County is known as a "county of culture." Over the years, the historical memories and cultural assets of the people of Yilan have been extended through registration and preservation, investigation and research, cultural revival, and education, among other methods. With cultural assets embodying the spirit of cultural preservation, a blueprint for urban development that is eco-friendly and liveable, where the old and new can coexist, is also based on the corresponding connections of globalization, locality, urban aesthetics, and citizen participation.

Listed below are the 167 designated cultural heritage sites registered in the county as of 2020. This preservation of cultural heritage will continue into the future.

1. 38 historic sites, such as Zhaoying Temple in Yilan City.
2. 83 historic buildings such as the Presbyterian Sijie Church.
3. Two national archaeological sites: Hanben and Wanshan.
4. Six cultural landscapes such as the Qing Dynasty Wushi Harbor Relics.
5. 19 antiquities such as the Toucheng Monument to the Loyal Dead.
6. Six traditional performing arts such as Beiguan Theater.
7. Seven traditional handicrafts such as twine flowers.
8. Six folk customs such as Toucheng pole-climbing.

Responsible Dep.	Indicator	2020	2030 Target
Dept. of Cultural Affairs	Number of registered cultural heritage sites	167	192

Formula: 15% growth from 2020

5) Sustainable Development Goals and Results



SDG11 Sustainable Cities and Communities

Make cities and human settlements inclusive, safe, resilient, and sustainable



Target 11.5

By 2030, significantly reduce the number of deaths and the number of people affected and substantially decrease the direct economic losses relative to global gross domestic product caused by disasters, including water-related disasters, with a focus on protecting the poor and people in vulnerable situations.

Promoting Autonomous Community Mudslide Prevention

Within Yilan County, there are 150 streams throughout 8 townships with the potential to create a mudslide and 57 villages are located within the range of a potential mudslide. Based on each community's potential risk, Yilan County promotes autonomous disaster prevention within these communities. Since 2018, it has promoted the establishment of an autonomous disaster prevention team against mudslides in 50 villages, with a total rate of 98% that is expected to reach 100% in 2022.

Yilan is surrounded by mountains on three sides and the sea on the other, so it experiences unique terrain and climate conditions. The area is also extremely prone to natural disasters such as floods, collapses, and mud and landslides following typhoons or heavy rains. In addition, due to the greenhouse effect, the frequency of global weather abnormalities has increased. This has led to increased rainfall amount and intensity, resulting in a significant increase in compound disasters, seriously impacting county residents' lives and property. With this in mind, Yilan County helped set up autonomous disaster prevention teams, training residents through drills, practical exercises, and training seminars to gain a clear grasp of the disaster prevention process from occurrence to completion. Also, lateral and vertical communication skills help synergize disaster prevention resources to improve communities' ability to withstand disasters.

At the same time, through the establishment of an autonomous disaster prevention support system, LINE messages are sent as a warning to the community to make preparations ahead of a disaster. Also, experts teach community members about the potential risk factors in their environment and assist in the establishment of inspection points, teach villagers how to use the disaster prevention app and conduct community inspections to reduce the threat of typhoons and heavy rain. Disaster prevention smart technology that combines video technology with disaster prevention uses LINE video calls to directly present the community patrol environment and real-time implementation of disaster prevention tasks so that the commander and other team members can use video to quickly learn about and respond to on-site conditions.

Responsible Dep.	Indicator	2020	2030 Target
Water Resources	Total ratio of community mudslide disaster prevention support systems	84.6%	100%

Formula: Ratio of disaster prevention communities= (established mudslide prevention autonomous community systems/villages in the impact range of a mudslide) *100%

5) Sustainable Development Goals and Results



Community Project for Flood and Disaster Prevention

Taiwan's unique hydrological conditions such as steep slopes and short currents mean that rainfall travels quickly from upstream to downstream, making the area flood-prone during heavy rains and typhoons. Rainfall has increased in concentration and intensity due to the greenhouse effect. This has severely impacted the lives and properties of county residents. Also, due to its topography and climate, Yilan County suffers from even more serious damage during floods.

Given that engineering methods have limited effectiveness, Yilan County aims to promote other measures such as "community flood prevention support systems" set up in 28 flood-prone areas throughout the county. Through knowledge and technology related to disaster prevention and rescue, this system can assist in rapid evacuation and refuge, helping to quickly rebuild after a disaster so as to reduce the impact of a flood on people's lives. Moreover, in order to cultivate a pool of skilled disaster community volunteers as well as carry out 27 training sessions for members of community organizations, each year there is one symposium to discuss community achievements in flood prevention and four drills.

Also, Yilan County has continued to guide disaster prevention communities to implement disaster prevention technology, such as using LINE to share warning messages and the Water Resources Department app to report current conditions in the community. These conditions can include pre-disaster preparation, disaster response, post-disaster recovery, etc., so that the government can quickly assess situations and promptly deliver assistance to the community to minimize the impact of a flood. Regarding the reinforcement of disaster relief equipment, the government has also launched a corporate disaster prevention team to support joint defense mechanisms, establish clear cooperation channels during training, and implement disaster prevention and rescue partnerships. When disaster strikes, a team can comprehensively respond right away.

Responsible Dep.	Indicator	2020	2030 Target
Water Resources	Total ratio of community mudslide disaster prevention support systems	100%	100%

Formula: Ratio of disaster prevention communities= (established mudslide prevention autonomous community systems/villages in the impact range of a mudslide) *100%



Xinqun Community training



Yutian Community training

5) Sustainable Development Goals and Results



SDG11 Sustainable Cities and Communities

Make cities and human settlements inclusive, safe, resilient, and sustainable



Constructing Digital Radio Equipment to Improve Communication Ability

As the county gradually urbanizes and the Suhua highway opens to traffic, disaster prevention and relief will grow more challenging. In recent years, many public security incidents have occurred in Yilan County. The existing fire-fighting and disaster relief radio equipment is outdated and ineffective.

Currently, about 60% of existing fire-fighting and disaster-relief analog radios are past their service life by more than ten years. Radio communication problems are prone to occur during on-site disaster relief. It is sometimes impossible to have clear contact with disaster relief centers, resulting in difficulties in directing and dispatching relief communications, sometimes even affecting the timeliness of a rescue. A digital radio system in Yilan County reduces radio communication barriers during disaster relief through the benefits of digital radio communication to allow rescuers to take advantage of the "golden window" to save the lives and property of citizens and more quickly tackle disaster accidents.

Currently, the county has built digital relay stations in four locations, including Dong'aoling, Guishan Island, Yingziling, and Dongshan, as well as one disaster relief and rescue relay station. The Taipingshan disaster relief relay station is expected to be completed by the end of 2021. It will help rescuers overcome the obstacles of mountainous terrain and transmit disaster relief orders and information to frontline personnel to help protect the lives and property of county residents.

Responsible Dep.	Indicator	2020	2030 Target
Fire Bureau	Implementation rate of fire and disaster relief digital radio systems	47.26%	100%

Formula: Implementation rate = (digitalized radios/total radios) *100%



Radio communication



Radio equipment

5) Sustainable Development Goals and Results



Reducing Residential Fire Risk

Protecting the lives of county residents is an important goal of government agencies. For public buildings above a certain size, Yilan County has required the installation of automatic fire alarm equipment in accordance with the law. According to fire investigation cases, for county residents whose homes do not have fire safety equipment, there is often insufficient escape time once a fire occurs. Therefore, the installation of home fire alarms is an important measure to reduce the risk of home fires. Yilan County is continuing to increase the installation rate of residential fire alarms through diverse methods of promotion, subsidies for disadvantaged groups, and social resources, etc.

As of September 2021, the county's installation rate has reached 79.66%. After 2021, this rate is expected to grow by 1 or 2% each year. The goal is for 95% of residences to have fire alarms installed by 2030. At the same time, for those residences that already have fire alarms, they are educated about how to clean the devices and their battery life. Through home visits, county residents learn that the maintenance of this equipment is also an important task. This way, residents can comprehensively improve their fire safety awareness and in the case of an emergency, escape time can be lowered, reducing the potential risk posed by a fire.

Responsible Dep.	Indicator	2020	2030 Target
Fire Bureau	Installation rate of home fire alarms	71.26%	95%

Formula: Installation rate=(installed residence alarms/total number of residences) *100%



Smoke detector education

5) Sustainable Development Goals and Results



SDG11 Sustainable Cities and Communities

Make cities and human settlements inclusive, safe, resilient, and sustainable



Target 11.6

By 2030, reduce the adverse per capita environmental impact of cities, including by paying special attention to air quality and municipal and other waste management.

Maintaining Yilan's Air Quality and Returning to Class II Control Region

In 2012, Taiwan added PM_{2.5} particles to air quality standards and began manual monitoring for PM_{2.5}. By 2016, the Environmental Protection Administration announced that PM_{2.5} in Yilan County did not meet air quality standards and declared the area to be a Class III control region.

In recent years, after Yilan County listed reducing PM_{2.5} as a key air quality improvement project while cooperating with the national government's policies, checking the characteristics of air pollution emissions, and promoting various air pollution control methods, the county's PM_{2.5} levels have met Taiwan's air quality standards since 2017. In December 2020, the Environmental Protection Administration announced in its 9th air pollution prevention and control zoning results that based on PM_{2.5} levels, Yilan would be reclassified from a Class III zone that does not meet air quality standards to a Class II zone that met air quality standards. Today, all air pollutants in the county meet air quality standards.

In the future, the county will continue to cooperate with control policies formulated by the national government while actively negotiating with public and private venues to decrease air pollution emissions and also conduct regular environmental monitoring to develop control strategies for key pollution sources in the county to meet public expectations.

Responsible Dep.	Indicator	2020	2030 Target
Environmental Protection	Fine particulate matter (PM _{2.5}) annual average	9.0 µg/m ³	< 9 µg/m ³
	Value corresponding to air-quality standard for "24-hour value" of PM _{2.5}	20.0 µg/m ³	< 20.0 µg/m ³
	Value corresponding to air-quality standard for "8-hour average" of ozone (O ₃)	55 ppb	< 55 ppb

Note: µg/m³ is microgram per cubic meter; ppb is parts per billion.

5) Sustainable Development Goals and Results



Target 11.7

By 2030, provide universal access to safe, inclusive and accessible, green and public spaces, in particular for women and children, older persons and persons with disabilities.

Improving Accessible Pedestrian Spaces

In order to better serve an aging society and an increase in social welfare needs through balanced regional development with constructions in urban and rural areas, there has been an increased interest in creating accessible environments and pathways. Through public construction and eco-friendly planning, urban roads are reworked to enhance urban environmental quality and improve pedestrian spaces and public traffic overall by upgrading bicycle lanes, street landscapes, telephone and other cables, signs, public pipes (wires) and other projects.

The county’s urban roads total about 542 km with 171 km of sidewalks, making a proliferation rate of about 31.5%. Based on 2017-2021 acquired funds from the Ministry of the Interior, sidewalks can be increased by about 69.59 km, an average of 13.9 km each year. It is estimated that the length of sidewalks will reach about 296 km by 2030, with a total proliferation rate of about 50%.

Responsible Dep.	Indicator	2020	2030 Target
Transportation	Proliferation rate of sidewalks	31.5%	50%

Formula: Rate = (length of roads with sidewalks/total length of all roads) *100%



Enhancing pedestrian-friendly environment

5) Sustainable Development Goals and Results



SDG11 Sustainable Cities and Communities

Make cities and human settlements inclusive, safe, resilient, and sustainable



Target 11.a

Support positive economic, social and environmental links between urban, per-urban and rural areas by strengthening national and regional development planning.

Improving Living Environment of Rural Communities in Rezoning Areas

In order to improve rural living environments, plan public spaces and facilities, and decrease the gap between urban and rural areas, Yilan County is rezoning rural communities. Currently, the rural communities of Dayin and Alancheng in Sanxing and Yuanshan Townships have been completed. The rezoning areas are 9 and 7.8 hectares, and about 5.4 hectares of public facilities have been completed.

Land rezoning for the rural Wanshan Community in Dongshan Township is still in progress. With an area of 9.89 hectares, public facilities will make up an estimated 2.90 hectares. The rezoning of rural communities in Dayin, Alancheng, and Wanshan is expected to be completed by 2030 with the expected area of public facilities to be about 8.3 hectares.

Responsible Dep.	Indicator	2020	2030 Target
Land Admin	Replotting program	65% Organized 2 rural communities in Dayin and Alancheng, and completed about 5.4 hectares of public facilities after rezoning.	100% Rezone rural communities in the three areas of Dayin, Alancheng, and Wanshan and complete approximately 8.3 hectares of public facilities.

Formula: Rate=(replotted community area/total area of 3 communities) *100%.



Dayin District Park, Sanxing Township



Detention basin facility, Alancheng District, Yuanshan Township

5) Sustainable Development Goals and Results



Overall Planning of Rural Areas

In order to improve problems associated with housing, industry, transportation, and rural public facilities, the National Spatial Plan, announced in April 2018, adopted the "General Rural Area Plan" as a strategy for land development with the hope of evaluating rural areas to draw up a spatial development strategy and land use outline plan. At the same time, it integrates policy resources to invest in public construction keeping various factors such as lifestyle, production, and ecology in mind to assist in improving the environment, coordinating industry needs, and maintaining ecological landscapes. In shaping the characteristics of rural areas, "promoting overall planning and shaping the characteristics of rural areas" has been put forth as the guiding principle of spatial development.

The Yilan County Spatial Plan, formulated to deal with land use situations, has long lacked planned guidance for non-urban areas and has created long-term resource investment imbalances. According to guidance under the National Spatial Plan, the development model of making both urban and rural areas distinctive with their own features has been proposed as an overall spatial development concept. This concept guides the redevelopment of urban areas and effectively uses urban development land to meet the needs of housing, commerce, industry, and property. In non-urban rural areas, the need for public facilities and industrial redevelopment opportunities is met under the premise that farmlands are maintained. The Yilan County Spatial Plan will continue to handle the overall planning of rural areas, take stock of regional resources, discover new issues and solutions, build connections between urban and rural areas, and seek plans that meet the goals of regional environmental maintenance, economic development, and landscape transformation. Rural residents' needs and expectations can be met through spatial planning, land management tools and resource integration policy.

Responsible Dep.	Indicator	2020	2030 Target
Economic Affairs	Number of rural townships covered in overall planning	0 (National Spatial Plan in progress)	6

5) Sustainable Development Goals and Results



SDG12 Responsible Consumption and Production

Ensure Sustainable Consumption and Production Patterns



Yilan County has long adhered to the protection and sustainable use of natural resources. For its stellar performance in national recycling performance assessments, the county has received the "Gold Award"—the highest environmental award—for 5 consecutive years. Through the recycling and reuse of food waste, proper disposal of bottom ash, and promotion of reclaimed asphalt concrete, etc., the county has greatly reduced the generation of waste. They have carried out plastic reduction activities to reduce the use of disposable plastic bags and encouraged people to engage in eco-consumerism. Citizens who have got on board with the movement have become the environmental champions that the environment so desperately needs.

Target 12.5

By 2030, substantially reduce waste generation through prevention, reduction, recycling, and reuse.

Bags for Happiness Bins Bringing Environmental Protection and Happiness

In order to reduce the use of plastic bags, Yilan County has set up bags for happiness bins and second-hand bag recycling bins in stores and community buildings. The environmental cause is championed by chanting the slogan, "Pick up one bag to replenish two eco-friendly bags in the future." People reduce the use of disposable plastic bags in order to reduce plastic and carbon emissions.

The county also actively promotes and educates the owners of stores on how they can participate in green practice certification, reduce excessive packaging and the use of disposable plastic products, and implement a lifestyle that reduces plastic consumption.

In 2020, the county set up 51 "Bags for Happiness Bins" locations in stores and 20 second-hand bag recycling bins in community buildings. A total of 117,994 environmentally friendly bags were collected and replenished, which was estimated to reduce 2,832 kilograms of waste and 2,144 kilograms of carbon dioxide. Under the county's guidance, 41 stores have already received certification proving they have satisfied the requirements to be qualified as green stores according to the government's program—"Be a Green Store by Reducing Plastic." By engaging in plastic-reduction consumption activities with the help of green store owners, the county has boosted the efficacy of its publicity.

Responsible Dep.	Indicator	2020	2030 Target
Environmental Protection	Carbon Reduction Benefit	With 117,994 eco-friendly bags collected and replenished, it was estimated that 2,832 kilograms of waste and 2,144 kilograms of carbon dioxide were reduced.	By collecting and replenishing 150,000 eco-friendly bags, it is estimated that 3,600 kilograms of waste and 2,725.2 kilograms of carbon dioxide will be reduced.
	Number of Green Stores	41	90

5) Sustainable Development Goals and Results



Promoting Waste as Gold in the Green Economy

Yilan County encourages citizens to appreciate the food they consume by reducing food waste and cherishing the leftovers. They also encourage people to waste as little as possible when cooking their own meals and eating out by taking leftovers home. They have established the "raw and cooked kitchen waste" recycling system to promote the ardent recycling and reuse of food waste. Blue and yellow food waste bins are attached to the garbage trucks to collect cooked and raw food waste. People are encouraged to hand over the food waste to cleaning squadrons when they take out the garbage. In order to properly handle food waste and improve the reuse rate of food waste, the county has built 3 organic waste treatment plants, including 1 raw food waste treatment plant and 2 cooked food waste treatment plants.

In addition, to properly dispose of the bottom ash generated by waste incineration and increase the recycling rate of bottom ash, the county has built a screening plant to reuse the bottom ash generated from the incineration furnace as a cement substitute in public works throughout the county. Recycled ceramic toilets can also be reused as granular material in the county's engineering projects.

In 2020, the "waste recovery rate" was 61% and central government subsidies amounting to 88,293,620 NTD were requested and acquired for the purposes of optimizing the food waste yard. They also received 45 million NTD to build a self-screening plant for the screening and reuse of bottom ash produced by incinerators.

Responsible Dep.	Indicator	2020	2030 Target
Environmental Protection	Waste recovery rate	61%	65%
	Bottom ash recycling rate	100%	100%

Formula: (1) Municipal waste recycling rate = the sum of food waste recycling rate, resource recovery rate, and bulk waste recycling rate. (2) Recycling rate of bottom ash = (volume of reusable bottom ash/overall bottom ash load) *100%.



Advocating source reduction and promoting maps displaying conservation stations in Yilan County

5) Sustainable Development Goals and Results



SDG12 Responsible Consumption and Production

Ensure Sustainable Consumption and Production Patterns



Promoting Reclaimed Asphalt Concrete Applications

Reusable reclaimed asphalt concrete must fit the demands of a wide variety of applications. The bulk of reclaimed asphalt concrete should be used directly; however, if in the event of a surplus, the price of the remaining amount should be checked according to market conditions, and a reasonable discount or disposal fee should be provided according to each case. Furthermore, the output and quantity of reclaimed asphalt concrete should be reported to the Public Construction Commission to better understand the output and quantity of reclaimed asphalt concrete distributed throughout public projects, and to formulate effective countermeasures and pragmatic solutions.

The county conforms to the project specifications related to the reprocessing of reclaimed asphalt and the related technical guidelines for its various purposes. Meeting such demands strengthens the understanding of reclaimed asphalt concrete and supports project organizers to be the first to acquire reclaimed asphalt concrete, effectively reducing any resulting surplus.

Other than continually carrying out road projects to meet the needs of public works in the county, Yilan County also inventories paving material storage sites, and plans on evaluating roads with small traffic flows for their suitability in testing out cold-mix asphalt concrete as a viable paving material, effectively reducing the amount of asphalt concrete waste. By 2030, the goal is to achieve an average reuse rate of more than 100% of reclaimed asphalt concrete.

Responsible Dep.	Indicator	2020	2030 Target
Transportation	Average recycling rate of reclaimed asphalt concrete ㄚ	70%	100%

Formula: Average reuse rate of asphalt concrete = (usage/output of this project or cross-project load)*100%.



Asphalt removal and replacement

5) Sustainable Development Goals and Results



Target 12.7

Promote public procurement practices that are sustainable, in accordance with national policies and priorities.

Implementing Sustainable Consumption and Answering the General Population's Call to Green Living

In order to promote eco-consumerism, Yilan County offers guidance to green shops in the area on how to sell green products and keep track of their sales for those products. It guides private enterprises and organizations to apply for green procurement and also uses green consumption promotion activities to encourage the public to become members of environmental protection with the Green Point Reward Scheme. It furthermore assists hotels, homestay, and restaurants in the area on how to become environmentally friendly hotels or green restaurants.

In 2020, the amount of green products sold in green stores within Yilan was about 40 million NTD; the amount of green purchase declarations for private enterprises and organizations was about 160 million NTD; 7,000 people have been included in green consumption promotion activities; 6 new businesses have become environmentally friendly hotels (a total of 118 so far); in 2020, a total of 21 companies were guided to become green restaurants.

Responsible Dep.	Indicator	2020	2030 Target
Environmental Protection	Target amount of green goods sold in green stores	40,457,200 NTD	49,317,101 NTD
	Target amount of green purchase declarations for private enterprises and organizations	164,000,000 NTD	199,915,085 NTD
	Number of citizens that join the Green Point Reward Scheme	831	1000
	Number of homestays and hotels guided to become eco-friendly hotels	At least 5 establishments, but in the end 6 for the year	At least 6 establishments

Formula: Guiding private enterprises and organizations on how to apply for green procurement. The target amount is based on 2020, which will increase by 2% every year.

5) Sustainable Development Goals and Results



SDG13 CLIMATE ACTION

Take urgent action to combat climate change and its impacts



Carbon emission reduction has been of great concern to the world community in recent years. As a low-carbon model city in Eastern Taiwan, Yilan County has devoted much attention to carbon emission reduction. As a result, the county has formulated and implemented several strategies and plans to reduce greenhouse gas emissions. Afforestation projects are also promoted in expectation that the public sector and community residents can work together to carry out various low-carbon activities to maintain a living environment with good air quality.

Target 13.2

Integrate climate change measures into national policies, strategies and planning.

Aiming for zero emissions by 2050 in response to climate change

Under the provisions of the Greenhouse Gas Reduction and Management Act, Yilan County submitted the “Yilan County Government Greenhouse Gas Control Implementation Plan” in 2019 and proposed reduction strategies and implementation plans for greenhouse gas emissions of various departments to slow down the increase in greenhouse gases and help achieve the national long-term greenhouse gas reduction goals.

Yilan County Greenhouse Gas Control and Energy Transformation Promotion Group holds at least two meetings each year to conduct rolling reviews on the promoted strategies and implementation results of currently implemented plans, inviting experts and scholars to share their professional opinions.

To ensure greenhouse gas reduction in response to climate change, the government inspected the implementation result of carbon reduction in 2020. With an average of 7.798 million metric tons of CO₂e from 2012 to 2016 as the benchmark, carbon reduction of the first phase (until 2020) is estimated to reach 292,000 metric tons, about 3.7%, which is better than expected.

Emissions in the county are mostly produced by the industrial sector (accounting for 73.3% of the total emissions), which poses a difficult dilemma between carbon reduction and national economic development; therefore, future challenges in this regard will become more difficult to overcome. Yet, in line with international trends and national policies, Yilan still strives to achieve the goal of net zero emissions by 2050.

Responsible Dep.	Indicator	2020	2030 Target
Environmental Protection Bureau	Percentage of carbon reduction compared to the benchmark	Goal: 2% actually reached 3.7% (carbon reduction of 292,000 metric tons of CO ₂ e)	Goal: 30% (reduction of 2,339,400 metric tons of CO ₂ e)

5) Sustainable Development Goals and Results



Promoting Afforestation in Plains to Increase Carbon Sequestration

As the world faces extreme weather conditions and the worsening climate crisis, to mitigate global warming, Yilan County has implemented active measures to protect the environment, conserve energy, reduce carbon, promote afforestation, and increase greenery in living environments.

The county has long been engaged in the planting of new seedlings for afforestation on hillsides and public land, in places of government agencies, by rivers and canals, and along both sides of bicycle lanes, as well as for the greening of local communities and groups in the private sector. Moreover, education and guidance are given to encourage everyone to participate in afforestation. From household greening to tree planting by government agencies, and collaboration of companies in both the public and private sectors it is hoped that the efforts of all the individuals in each household, village, town, and city can be connected and eventually expanded throughout the whole county. By establishing and maintaining healthy environments and combining local human resources and materials, the vision of sustainability can be realized. According to statistics, a total of 1,075 trees were planted in 2018, a total of 1,092 were planted in 2019, a total of 1,874 in 2020, and a total of 500 in 2021.

Each tree captures and stores an average of 12 kilograms of carbon per year. The current number of trees in the county is estimated at about 60,000 (including 34,700 trees beside roads, in parks, and in riverside green areas managed by the county and those managed by local public offices, as well as trees beside provincial highways). As calculated by $60,000 * 12 \text{ kg} = 720,000 \text{ (kg/year)}$, the total carbon sequestration in 2020 is estimated at 720 metric tons/year.

In addition, about 2,500 trees are planted each year, which exceeds the target of 1,000 trees each year. Taking replanted trees, trees planted for governmental construction projects, and trees planted beside public roads and in parks into calculation, a total of 3,000 trees are added each year. Deducting 500 trees withered or damaged by disasters, a net increase of 2500 trees per year is estimated. From 2020 to 2030, it is estimated that about 25,000 trees will be planted, and the total number of trees in the county will reach about 85,000 in 2030. As calculated from $85,000 \text{ trees} * 12 \text{ kg} = 1,020,000 \text{ kg}$, the target of annual carbon sequestration in 2030 is set at 1,020 metric tons/year.

Responsible Dep.	Indicator	2020	2030 Target
Agriculture	Annual carbon sequestration of trees in plain areas (including new and existing trees)	720 metric tons/year	1,020 metric tons/year



Greening and beautification of environment by planting trees

5) Sustainable Development Goals and Results



SDG14 Life Below Water

Conserve and Sustainably Use the Oceans, Seas and Marine Resources for Sustainable Development



The ocean is one of the most precious ecological resources on Earth, but it has been severely threatened by climate change, plastic pollution, and destructive fishing practices. To protect the marine ecology of Yilan County, the county government has pushed forward sustainable marine policies and implemented proactive measures, including promoting marine education, establishing fisheries resource conservation areas, and adopting ecologically-friendly fishing practices. These actions aim to encourage the general public, schools, and the society to work together and ensure the sustainability of marine resources.

Target 14.1

By 2025, prevent and significantly reduce marine pollution of all kinds, in particular from land-based activities, including marine debris and nutrient pollution.

Promoting Marine Education to Ensure Sustainable Marine Development

To raise the awareness of marine environmental protection for students in Yilan County and implement the practice of sustainable development goals, the county government formulated three main categories for marine protection: plastic reduction, coastal protection, and fish diet education. With the promotion of marine education courses and activities, students are allowed to have their impact on marine environmental protection and protect the beautiful coasts of Yilan County.

In terms of plastic reduction, through the beach cleaning activities stipulated in the 2019 Curriculum Guidelines, students can learn the impact of marine pollution on the environment. Teachers in Yilan County can also include marine protection as part of their instructional design in art classes. For example, students can turn the objects they find in beach cleaning activities into installation art or ornaments and beautify their lives. In addition, Yilan County is developing interdisciplinary lesson plans for elementary and junior high school students. Incorporated with marine education and literacy-based education as stipulated in the 2019 Curriculum Guidelines, these lesson plans can help establish a full teaching context of marine education.

As for coastal protection, by engaging in the construction of coastal protection structures, students can understand the functions of coastal protection forests. The county government is also developing marine education courses and optimizing the current marine education courses in coastal schools as well as the promotion of these courses in inland schools.

Regarding fish diet education, introducing the concept of “co-creating sustainability with fish,” the county government aims to promote fish-eating education in inland schools in the county. Moreover, the responsible department is also promoting related courses and organizing activities on Marine Education Week, the week of World Oceans Day, so that students in inland schools can understand the importance of marine protection as well.

5) Sustainable Development Goals and Results



Responsible Dep.	Indicator	2020	2030 Target
教育處	Over 40 schools develop marine education courses	20%	100%
	Over 80 schools include marine education as featured courses	20%	100%
	Over 80 schools participate in the marine education presentation	50%	100%



Ocean cleaning activities



花腹鯖--花飛、青飛(澎湖)

- 很團結
- 洄游性

<https://www.youtube.com/watch?v=stch7rfoai=9&v=GcQarcl1B5c&feature=youtu.be&t=91>

Promotion of fish diet education



Marine education activities

5) Sustainable Development Goals and Results



SDG14 Life Below Water

Conserve and Sustainably Use the Oceans, Seas and Marine Resources for Sustainable Development



Establishing Environmental Protection Fleets to Protect the Marine Environment

For a long time, the ocean has been polluted by waste of all kinds. Marine debris is harmful to marine ecosystems and propellers are likely to get caught in fishing nets and cause malfunctions, jeopardizing the safety of navigation. To establish environmental protection fleets to remove marine debris and underwater trash and expand the cleaning capacity, the county government encourages the 1,300 fishing boats within the county to join the fleet. Members of the fleet are asked to voluntarily take their own trash back to land, pick up trash floating at sea, implement waste sorting and recycling, and keep the ports clean. With an addition of 66 boats this year, Yilan County has recruited a total of 88 boats to join the fleet, which accounts for 6.4% of the total boats. The ongoing recruitment aims to restore the ecological environment near the ocean, protect the marine environment, and ensure sustainable development.

Responsible Dep.	Indicator	2020	2030 Target
Agriculture	Percentage of fishing boats that are in the environmental protection fleet	1.6%	100%

Formula: Percentage = Number of boats in the environmental protection fleet / the number of fishing boats within the county * 100%.

Recruiting Diving Team Members to Remove Marine Debris

The removal of marine debris, especially ghost nets, is extremely important work that requires scuba divers to cut debris into smaller pieces before removing it from the bottom of the ocean. This year, the county government held a joint pep rally with local diving groups to show their ambition and strengthen their morale. Moreover, in partnership with the Ocean Affairs Council, the government organizes themed ocean-cleaning activities every year to disseminate the vision of marine conservation and remove underwater trash. As of now, there are 17 diving team members and a total of 660 kilograms of underwater trash has been removed.

Responsible Dep.	Indicator	2020	2030 Target
Agriculture	Number of diving team members who help remove marine debris	0 人	100 人

Formula: Recruit 10 diving team members to remove debris each year.



Ocean cleaning activities

5) Sustainable Development Goals and Results



Improving Coastal Cleanliness and Reducing Marine Pollution

To maintain the environmental quality in coastal areas, land and river management authorities have to reinforce the maintenance of the environment to prevent trash from entering the ocean. In addition, the departments and bureaus of the county will work in concert to conduct simulations and drills for emergencies and make continuous adjustments to the Marine Pollution Action Plans for Yilan County. Water quality monitoring in coastal areas is also necessary in order to learn about the changes in water quality.

To ensure the cleanliness of coastal areas, Yilan County launched the coastal cleaning and maintenance project Salute to the Ocean. As a cross-department platform that includes resources of both the central and local governments, this project aims to organize regular cleanups in coastal areas, promote the adoption of coastlines, and hold beach cleaning activities.

Responsible Dep.	Indicator	2020	2030 Target
Environmental Protection	Qualified rate of water quality with seven indicators, including dissolved oxygen, cadmium, lead, mercury, copper, zinc, and ammonia nitrogen	98.35%	>99.6%
	Amount of garbage removed through the coastal cleaning and maintenance project-Salute to the Ocean	1,105.493 tons of trash removed, 4,857 people participated, 578 times of cleaning, and 4,324.853 kilometers of coastlines cleaned	Amount of trash that needs to be removed decrease by 30% compared to the amount in 2021

5) Sustainable Development Goals and Results



SDG14 Life Below Water

Conserve and Sustainably Use the Oceans, Seas and Marine Resources for Sustainable Development



Target 14.2

Sustainably manage and protect marine and coastal ecosystems to avoid significant adverse impacts, including by strengthening their resilience, and take action for their restoration in order to achieve healthy and productive oceans.

Bolstering the Establishment of Civil Ocean Patrolling Teams

There are three fisheries resource conservation areas in Yilan County: Toucheng, Su'ao, and Dong'ao. The Dong'ao patrolling team was established in 2018 and has 30 members as of now. The county government is set to provide guidance and help establish patrolling teams in Toucheng and Su'ao by 2030. With the power of both the public and private sector, this will enhance the efficiency of marine conservation. Furthermore, the government launched the Satoumi project and the construction of Satoumi fields to empower the patrolling team in Dong'ao Fisheries Resource Conservation Area. The team completed diving training this year. In the future, ecological surveys will be included as part of their training courses to introduce the concept of citizen scientists.

Responsible Dep.	Indicator	2020	2030 Target
Agriculture	Number of ocean patrolling teams	1	3

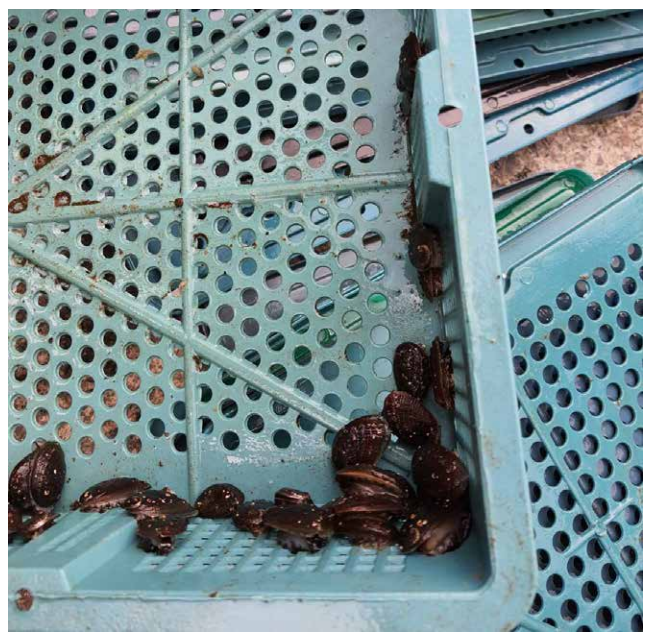
Releasing Fish Fry to Restore Marine Resources

The temperature of the ocean is rising due to global warming. In order to ensure sustainable marine resources and practice ecological conservation, a total of six fish fry releasing activities were held in 2020, including the release of 60,000 juvenile sea urchin and 305,000 juvenile abalone. The authority aims to organize at least five fish fry releasing activities every year to restore marine resources. In line with the promotion of fish diet education and sustainable fishing and eating practices, choosing from the bottom of food chains as main food sources is encouraged so as to ensure the sustainable development of fisheries.

Responsible Dep.	Indicator	2020	2030 Target
Agriculture	Percentage of achievement	100%	100%

Formula: Percentage of achievement = Number of fish fry releasing activities / the targeted number of activities *100%. ㄉ

5) Sustainable Development Goals and Results



Ocean resources restoration activities

5) Sustainable Development Goals and Results



SDG14 Life Below Water

Conserve and Sustainably Use the Oceans, Seas and Marine Resources for Sustainable Development



Target 14.4

Effectively regulate harvesting and end overfishing, illegal, unreported and unregulated fishing and destructive fishing practices and implement science-based management plans, in order to restore fish stocks in the shortest time feasible, at least to levels that can produce maximum sustainable yield as determined by their biological characteristics.

Promoting Real-Name Registration of Gillnets and the Withdrawal of Destructive Fishing Practices

To prevent fishery waste from causing marine pollution, the county government formulated the strategies of “prevention, reduction, and removal” to promote real-name registration of gillnets, establish a source management mechanism for fishing gears, and make sure the users are held accountable for their actions. In doing so, the number of unclaimed fishing gear decreased, reducing the amount of underwater ghost nets and marine waste. By collecting the information on gillnet tags, the responsible department can implement source management on various fishing gear, conserve marine ecosystems, and sustainably manage marine resources. As of July 2021, all 347 fishing boats and fishing rafts with gillnets within the county have completed real-name registration.

In the hopes of reducing the amount of discarded fishing gear, the county government encourages fishermen to hand in their old and unwanted fishing nets in exchange for money. This mechanism aims to protect the habitats of marine animals, restore the fisheries resources in Yilan County, and help fishermen contribute to the sustainable development of the ocean. Fishermen can receive 10 to 15 NT dollars from the government for every kilogram of old and unwanted fishing nets they hand in, with the maximum amount of nets being 1,000 kilograms per boat. In 2021, a total of 14,000 kilograms of old and unwanted fishing nets have been handed in.

As fishermen and others become more aware of conservation, gillnet fishery has been under fire due to its impact on the ecosystem and marine resources. To strengthen the conservation and restoration of marine ecosystems and ensure the sustainability of fisheries resources, the county government has bolstered the transformation of gillnet fishery to reduce the number of gillnet fishing boats and fishing rafts. The transformation encourages fishermen to adopt more ecologically-friendly fishing techniques, such as using angling gears or trolling lines. At first, there were 719 gillnet fishing boats and fishing rafts within the county. The number decreased every year by 191, 79, 20, and 47 from 2017 to 2020 respectively. So far, there has been a total reduction of 357 gillnet fishing boats and fishing rafts, accounting for 49.45% of total boats of this kind. The transformation can further reduce the amount of areas with gillnets and the risks of coral reefs entangled with fishing gears, eventually restoring marine ecosystems and ensuring the sustainability of fisheries resources.

5) Sustainable Development Goals and Results



According to the survey on the transformation of gillnet fishery in 2017 and 2018, about 60% of fishermen were on board with the plan. The target for 2030 is to have over 70% of gillnet fishing boats and fishing rafts transformed.

Responsible Dep.	Indicator	2020	2030 Target
Agriculture	Percentage of transformed gillnet fishing boats and fishing rafts	49.65%	70%

Formula: Percentage = Number of transformed gillnet fishing boats and fishing rafts / the total number of gillnet fishing boats and fishing rafts within the county *100%.



宜蘭縣廢棄網具收購

活動辦法

1. 事先撥打預約電話。
2. 於預約時間攜帶漁具及申請單、身分證明影本、有效期限之漁業執照影本及各種影本(非郵局存摺之手續費由獎勵金中扣除)至指定地點回收。
3. 回收獎勵金於兩個月發放一次至指定帳戶(每張漁業執照以申請1000公斤為限)。

回收網具：所有網具(漁具類均不予計價，每隻限)

10元	15元
素面浮球、浮球、浮球等具 船殼膠帶、船殼膠帶等。	藍面浮球、浮球、浮球等具 保潔膠帶、保潔膠帶等。

收購時間：(9:00~11:00 及 14:00~16:00)

日期: 6/1, 6/15, 6/29, 7/13, 7/27, 8/10, 8/24, 9/7, 9/23, 10/5, 10/19
預約電話: (03)971-7878 陳先生
地點: 蘇澳(南方澳漁業管理處對面)
日期: 6/2, 6/16, 6/30, 7/14, 7/28, 8/11, 8/25, 9/8, 9/22, 10/6, 10/20
預約電話: (03)999-8511 陳小姐

(僅供參考, 如有變更, 請向各區漁會、漁業局或漁業局查詢, 恕不另行通知)
(本活動經費將陸續發放, 主辦單位保留修改、終止、變更活動內容之權利。)

補助單位: 行政院農業委員會漁業局 宜蘭縣政府 宜蘭縣政府漁業局



Real-name registration of gillnets and the withdrawal of destructive fishing practices

5) Sustainable Development Goals and Results



SDG14 Life Below Water

Conserve and Sustainably Use the Oceans, Seas and Marine Resources for Sustainable Development



Target 14.5

Conserve at least 10 percent of coastal and marine areas, consistent with national and international law and based on the best available scientific information.

Establishing Fisheries Resource Conservation Areas

Establishing marine protected areas is an efficient and economical way to restore fisheries resources and protect marine biodiversity. The catch yield in regions outside of the protected areas actually increases thanks to the spillover effect. Currently, there are two fisheries resource conservation areas in Yilan County, one in Su'ao and another in Toucheng. In 2021, the establishment of Dong'ao Aquatic Plants and Animals Conservation Area was announced and is expected to be of great help to research on the marine animals in the protected area, the ocean economy, and ocean culture. The county government is set to establish yet another conservation area by 2030, making a total of four.

Responsible Dep.	Indicator	2020	2030 Target
Agriculture	Number of marine protected areas within the county	2	4

Formula: Transformaiton rate = (# transformed gillnet fishing boats/# total gillnet fishing boats in the county)*100%.



Su'ao



Toucheng



Dong'ao

5) Sustainable Development Goals and Results



Target 14.6

Prohibit certain forms of fisheries subsidies which contribute to overcapacity and overfishing, eliminate subsidies that contribute to illegal, unreported and unregulated fishing and refrain from introducing new such subsidies, recognizing that appropriate and effective special and differential treatment for developing and least developed countries should be an integral part of the World Trade Organization fisheries subsidies negotiation.

Providing Rewards for Voluntary Fishing Suspension to Conserve Fisheries Resources

To conserve and restore fisheries resources by reducing the catch rate and taking care of fishermen's livelihoods at the same time, the county government provides rewards for voluntary fishing suspension. Starting from Sep. 1st of the previous year to Aug. 31st of the current year, fishing boats that stay at port for over 120 days with more than 90 days of operation and 270 hours of operation time are eligible for a reward of 20,000 up to 200,000 NT dollars. Last year, due to the pandemic, the application requirements became lower. In the end, 721 fishing boats were on board with voluntary fishing suspension, including 439 for offshore fishing and 282 for deep sea fishing, and a total of 43,961,000 NT dollars were granted as rewards.

By the end of August 2021, 592 fishing boats (377 for offshore fishing and 215 for deep sea fishing) applied for voluntary fishing suspension, and the rewards were as high as 35,565,000 NT dollars. Currently, the fishing boats that are under voluntary suspension account for approximately 43% of the total boats. The central government formulated the Regulations for Rewards of Voluntary Fishing Suspense according to the principle of regulation instead of prohibition. In doing so, boat owners have the freedom to decide when to fish and when to suspend. By reducing the catch rate, the plan is expected to protect fishermen's livelihoods while restoring fisheries resources. If a mandatory fishing suspension is imposed, fishing boats will not be allowed to leave port and the livelihoods of boat owners and fishermen will be threatened. The cost of fishing suspension subsidies will be too high for the plan to work nationwide. By increasing the percentage to 50% by 2030, the reward mechanism is expected to reduce the catch rate and gradually restore fisheries resources.

Responsible Dep.	Indicator	2020	2030 Target
Agriculture	Percentage of achievement	47.7%	50%

Formula: Percentage of achievement = Number of fishing boats eligible for rewards for voluntary fishing suspension / the number of registered fishing boats in Yilan County *100%.

5) Sustainable Development Goals and Results



SDG15 Life on Land

Protect, Restore and Promote Sustainable Use of Terrestrial Ecosystems, Sustainably Manage Forests, Combat Desertification, and Halt and Reverse Land Degradation and Halt Biodiversity Loss



The biological diversity in terrestrial ecosystems provides the basis for human survival. In order to protect the ecosystem, the Yilan County Government has set plans for wetland conservation, organic farming, conservation of water and soil resources, and decreasing the impact of invasive species. Through proper education and promotion, students and the populace can learn to help prevent the loss of biodiversity and lay a foundation for environmental education.

Target 15.1

Ensure the conservation, restoration and sustainable use of terrestrial and inland freshwater ecosystems and their services, in particular forests, wetlands, mountains and drylands, in line with obligations under

Promoting Organic and Eco-friendly Farming

The Yilan County Government has been actively promoting the concept of sustainability to decrease the impact of pesticides and chemical fertilizers on the ecosystem through organic and eco-friendly farming.

There are 26,218 hectares of farmland in Yilan, with 609 hectares of it being made up of organic farms and 126 hectares of eco-friendly farmland. The County Government is actively expanding organic and eco-friendly sales channels and hosting events to promote organic and eco-friendly crops both within the county and outside. In addition, the county is also applying for funding from the central government for mechanical equipment and protected cultivation to help increase organic and eco-friendly farmland.

Due to the higher cost of organic and eco-friendly farming, their main sales channels target the mid to upper class. In addition, as a result of extreme weather, Yilan has been plagued with a more serious pest problem than previous years. An effective method of preventing pests still hasn't been found for organic farming, thus eco-friendly methods usually produce a lower yield. No matter from a supply or demand perspective, there are various restrictions for organic or eco-friendly farmland. Yilan County has set a target of increasing 50 hectares of organic and eco-friendly farmland per year. In 2030, the area of organic and eco-friendly farmland is projected to reach 1,235 hectares, making up 4.7% of total farmland in Yilan.

Responsible Dep.	Indicator	2020	2030 Target
Agriculture	Total percentage of organic and eco-friendly farmland	2.7%	4.7%

Formula: Total percentage = (area of organic and eco-friendly farmland/total area of farmland) *100%.

5) Sustainable Development Goals and Results



Organic and eco-friendly produce promotional event

5) Sustainable Development Goals and Results



SDG15 Life on Land

Protect, Restore and Promote Sustainable Use of Terrestrial Ecosystems, Sustainably Manage Forests, Combat Desertification, and Halt and Reverse Land Degradation and Halt Biodiversity Loss



Products from Yilan, Quality Ensured

Yilan has a short growing season (long rainy seasons during winter and spring, and insufficient farmland) and is unable to compete with the production of western Taiwan. This has resulted in the high-quality products of Yilan being inundated by the large amount of produce from the west and still being relatively unknown to customers. The purpose of the “Products from Yilan” label is to coalesce the strength of small farmers and to break into the market under the umbrella of the Yilan County Government. Through the management and quality assurance of the County Government, small farmers will no longer have to fight alone.

The Products from Yilan label emphasizes “traceability and zero-pesticide.” The label also calls for farmers that practice “precise field management” and “organic eco-friendly farming” to join, providing a layer of safety for consumers. The process of ensuring quality is made up of two parts:

1. Monitoring the production process: Members of the Products from Yilan label must record all actions during each stage of farming (e.g. fertilization, using chemicals, or use of materials). The County Government will periodically check the logs and provide counseling when needed.

2. Checking for pesticides: In order for customers to be able to enjoy produce with no traces of pesticides, the County Government sends surveyors to sample and test produce for illegal or unrecommended pesticides when it is still growing in the fields. The pre-market check-up is even more stringent and only those produce with no pesticide residues will be able to acquire the Products from Yilan label.

According to previous experience, around 25-30 farmers apply for the Products from Yilan label each year. In 2020, 125 farmers joined the label. It is the goal that in 2030 a target of 400 farmers will join the label.

Responsible Dep.	Indicator	2020	2030 Target
Agriculture	Percentage of farmers part of the Products From Yilan label	31.25%	100%

Formula: Achievement Rate = (Actual farmers that joined/target number of farmers) * 100%.

5) Sustainable Development Goals and Results



Farmers that have been selected by the county government for the “Products from Yilan” label sell their wares in Hope Square

5) Sustainable Development Goals and Results



SDG15 Life on Land

Protect, Restore and Promote Sustainable Use of Terrestrial Ecosystems, Sustainably Manage Forests, Combat Desertification, and Halt and Reverse Land Degradation and Halt Biodiversity Loss



Safety Measures Regarding Pesticide Use

In order to better monitor the distribution of pesticide and manage its use, and to assist farmers to more conveniently apply for subsidies for biological control agents or traceable agricultural products, Yilan County has come out with a real-name registration policy when purchasing pesticides. The County Government continues to recommend pesticide sellers to record purchase information when farmers come to purchase their products. For instance, the information regarding pesticide type, production, import, purchase, sales, and buyer should all be routinely updated to the system. To further strengthen the management of pesticides, the Yilan government held three refresher courses for pesticide management personnel in 2021.

Responsible Dep.	Indicator	2020	2030 Target
Agriculture	Pesticide Purchase Real-name Registration Rate	97.8%	100%

Formula: Registration Rate = (Pesticide sellers that reported back/Total pesticide sellers) * 100%.

Promoting the Arborist Counselling Program

When it comes to food safety management guidance, and in order to effectively strengthen the management of food safety, there is a need to establish produce management that follows the “farm-to-table” principle.

The Yilan County Government has continuously introduced trainee arborists to make on-site visits and assist farmers to diagnose pests and diseases. This helps farmers to better identify harmful substances, pinpoint the correct threats to their crops, assist farmers to use pesticides more accurately, encourage farmers to use eco-friendly methods and materials, and cut down on pesticide use for the better health and safety of our citizens. The quality of produce needs to be maintained together through the help of the Disease Control Center and Agricultural Research and Extension Station, assisting in the development and research of agriculture, and surveying for crucial pests and diseases.

Responsible Dep.	Indicator	2020	2030 Target
Agriculture	Percentage of Farmers Assisted by Arborists	10%	100%

Formula: Achievement Rate = (Actual assisted farmers/Target assisted farmers) * 100%.

5) Sustainable Development Goals and Results



Conservation and Utilization of Important Wetlands

Each important wetland has its own unique environmental conditions, so there is a need for customized conservation and utilization plans, each with its own different policies regarding wise use of wetland resources. These policies are in place to protect the wetlands from being exploited and also to properly use the land within wetland areas. While maintaining the biodiversity of wetlands, landowners can still use their land to a certain extent. As long as everything is according to current land use policies, landowners can still manage a business, farm, or even build a building.

Each year, the Yilan County Government will conduct a basic survey of the ecosystem and water quality of wetlands to observe changes in the environment and biology. The County Government will review the direction of conservation and utilization, conduct environmental education or volunteer training in schools and communities, and hope to preserve the wetland environment through the help of local residents. The value and existence of wetlands must be recognized and we should all work together for a better environment.

Responsible Dep.	Indicator	2020	2030 Target
Water Resources	Achievement Rate	100%	100%

Methods of assessment: The achievement rate is taken from implementation results in achievement reports.



Environmental conservation education event

5) Sustainable Development Goals and Results



SDG15 Life on Land

Protect, Restore and Promote Sustainable Use of Terrestrial Ecosystems, Sustainably Manage Forests, Combat Desertification, and Halt and Reverse Land Degradation and Halt Biodiversity Loss



Target 15.2

By 2020, promote the implementation of sustainable management of all types of forests, halt deforestation, restore degraded forests and substantially increase afforestation and reforestation globally.

Overuse of Mountainsides and Diverse Ways of Promotion

The past couple of years, climate change has affected the world and brought on increased chances of heavy rainfall. The annual flood period is from May to November, with 87% of land in eight Yilan townships residing on mountainsides. It is fairly easy for improper development to lead to landslides and other natural disasters that endanger the property of citizens and their lives. It is necessary to properly promote the concepts of disaster prevention and hillside conservation.

The Yilan County Government not only strengthens investigations regarding illegal usage of mountainsides and overuse, but also strictly reviews water and soil conservation plans in accordance with the law to properly manage mountainside usage. The Yilan government also works together with large-scale county activities and events to promote water and soil conservation, such as taking the mobile water conservation van into communities to host events.

In order to expand the effectiveness of the educational campaigns, each year a water and soil conservation event is held on campus. Through interactive teaching methods, education is combined with fun to pass on soil and water conservation knowledge. At the same time, this knowledge is also spread through various media and promotion events. The public must be educated about the importance of water and soil conservation, and the prevention of mountainside overuse. Mountain resources can be integrated and used in a sustainable way to achieve ecological conservation and safety of the land.

Responsible Dep.	Indicator	2020	2030 Target
Water Resources	Promotion Events Achievement Rate	100%	100%

Formula: Achievement rate = (Promotional events held/total events) * 100%.



Water and soil conservation education event

5) Sustainable Development Goals and Results



Target 15.4

By 2030, ensure the conservation of mountain ecosystems, including their biodiversity, in order to enhance their capacity to provide benefits that are essential for sustainable development.

Protecting Biodiversity and Natural Habitats

It is important to improve the understanding and increase the knowledge of terrestrial ecosystems for the county's teachers and students. That includes the interdependence between organisms, including humans, and the environment. This hopefully will push teachers and students in the county to action and learn more about the ecosystem. The county will start off by bringing up the level of teachers and providing a more comprehensive curriculum. Frontline teachers will be able to use teaching materials more suited to Yilan's unique ecosystem.

When it comes to improving the level of teachers, the Yilan County Government provides bountiful channels for teachers to learn more about Yilan's diverse ecosystem, including training courses on subjects such as biodiversity, geology and geography, meteorology, pedology, and more.

If environmental education is to be properly implemented, it is crucial to first observe, record, and feel the environment surrounding students. That is why the best place to start would be from around school campuses and their surroundings. The Yilan County Government has come out with teaching materials for students in grade 1 to grade 12. The curriculum is designed for teachers and students to be able to learn more about the terrestrial ecosystems on campus or in their communities.

In 2030, it is expected for there to be 10 courses of teaching materials designed and over 10 teaching workshops to improve the knowledge on the relevant subjects each year.

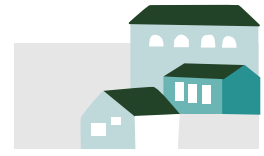
Responsible Dep.	Indicator	2020	2030 Target
Education	Over 10 Teaching Workshops	23%	100%
	Over 10 Sets of Teaching Materials on Terrestrial Ecosystem Biodiversity	0%	100%

5) Sustainable Development Goals and Results



SDG15 Life on Land

Protect, Restore and Promote Sustainable Use of Terrestrial Ecosystems, Sustainably Manage Forests, Combat Desertification, and Halt and Reverse Land Degradation and Halt Biodiversity Loss



Target 15.5

Take urgent and significant action to reduce the degradation of natural habitats, halt the loss of biodiversity and protect and prevent the extinction of threatened species.

Maintaining and Improving Terrestrial Ecology

There are three wildlife refuges in Yilan designated by the Wildlife Conservation Act. The Wuweigang Waterbird Refuge was designated on Sep. 24, 1993 and spans 103.35 hectares. The Shuanglianpi Wildlife Refuge was established in November 1993 and takes up 17.1578 hectares. There is also the Lanyang Rivermouth Waterbird Refuge that was established on Sep. 16, 1996 and encompasses 206 hectares. The total area of all these wildlife refuges make up 326 hectares.

The county has also set aside five nationally important wetlands, including the 17 hectares of Shuanglianpi, the 642.49 hectares of Wuweigang, 2,780 hectares of Lanyang Rivermouth, 298 hectares of 52-Jia, and 200 hectares of Nan'ao, bringing the total to 3,937.49 hectares.

From the start of 2021, the county pushed for the payment of important ecological services; provided monetary incentive for farmers to create, maintain, and monitor the habitat environments; and monitored progress on the conservation of the habitats.

Responsible Dep.	Indicator	2020	2030 Target
Agriculture	Total Improved and Tidied Habitat Area	12%	100%

Formula: Achievement rate = (Area of land treated/ total area of land to be treated)*100%.

5) Sustainable Development Goals and Results



Target 15.7

Take urgent action to end poaching and trafficking of protected species of flora and fauna and address both demand and supply of illegal wildlife products.

Continuously Improving the Capacity to Prevent the Illegal Slaughter of Wild Animals

In order to ensure wildlife conservation, the Yilan County Government is strict in its investigations towards the illegal possession or poaching of wild animals.

The county also raises the public's awareness towards the conservation of wild animals through various campaigns. For example, the county government invites citizens that possess hunting rifles to sign up for seminars regarding wildlife conservation and gun handling in order to reduce the cases of illegal hunting.

Starting from 2022, it is expected that a seminar will be hosted annually in conjunction with the Yilan County Police Department to promote the Wildlife Conservation Act and proper gun handling to owners of hunting rifles in Yilan.

Responsible Dep.	Indicator	2020	2030 Target
Agriculture	Number of Seminars in Cooperation with the Yilan County Police Department to Promote the Wildlife Conservation Act and Gun Handling to Hunting Rifle Owners	0%	100%

Methods of Assessment: Achievement Rate = (Actual seminars held/target number of seminars) *100%.



Scene of a wildlife investigation

5) Sustainable Development Goals and Results



SDG15 Life on Land

Protect, Restore and Promote Sustainable Use of Terrestrial Ecosystems, Sustainably Manage Forests, Combat Desertification, and Halt and Reverse Land Degradation and Halt Biodiversity Loss



Target 15.8

Introduce measures to prevent the introduction and significantly reduce the impact of invasive alien species on land and water ecosystems and control or eradicate the priority species.

Maintaining the Local Ecology and Preventing the Invasion of Alien Species

The Yilan County Government removed the spot-legged tree frogs, took preventive measures against fall armyworms, removed golden apple snails, and restricted red imported fire ants in order to reduce the impact of these foreign species on the Taiwanese ecology. The government also held prevention and control seminars for the public, with help from public and private sectors. Hopefully further damage to our ecosystem can be prevented and in turn protect our crops.

The county's various prevention and control measures for invasive species are as follows:

1. Removal of spot-legged tree frogs: In 2020, a total of 25 removals were carried out in Dajinlinkeng, Ren Shan Botanical Garden, Sanfu Farm, Dahu Scenic Area, and a field near Jishui Road in Wujie Township. A total of 377 male frogs, 92 female frogs, 19 young frogs, and 84 clumps of frog eggs were removed.
2. Removal of golden apple snails: Golden apple snails are highly adaptable and reproduce at an alarming speed. On average, each adult golden apple snail is able to produce 8,000 eggs a year. They enjoy feeding on fresh shoots and are a serious pest to crops. The County Government installed barrier nets (wire mesh) on the inlet of irrigation channels feeding into fields in order to prevent the invasion of the species. The County Government also strewed tea seed meal in the fields before planting shoots and used chemicals such as niclosamide and metaldehyde.
3. Preventive measures against fall armyworms: During the first stage, 0.79 hectares of fields were compulsorily sprayed with pesticide. During the second stage, an additional 10.2 hectares of fields were sprayed. In addition, six prevention and control seminars were held.
4. Preventive measures against red imported fire ants (RIFA): In 2021, one seminar was held and six locations were monitored. After preventive measures were taken, one of the locations was no longer troubled by RIFAs and we immediately applied for it to be removed from monitoring.
5. Preventive measures against lychee giant stink bugs: In 2020, a reward was placed on the eggs of the lychee giant stink bugs. Each clump of eggs could be turned in for NT\$5. The public was encouraged to help in the prevention of invasive species and to minimize the damage without using as much pesticide. In 2021, 240,000 *Anastatus japonicus*, the natural enemy of lychee giant stink bugs, were released in Dongshan Township, Yuanshan Township, and other mountainous areas. A total of seven seminars were held on the subject.

5) Sustainable Development Goals and Results



6. In 2020, a total area of 45.52 hectares were cleared. It is expected for this number to reach 60 hectares in 2030.

Responsible Dep.	Indicator	2020	2030 Target
Agriculture	Area Cleared	75.86%	100%
	Achievement Rate of Prevention Promotion and Removal Events Regarding Invasive Species	100%	100%

Formula: (1) Achievement rate = (Area cleaned/ total area to be cleaned)*100%. (2) Implementation rate = (# events held/ # total events)*100%.

Golden apple snail removal



Fall armyworm prevention and control seminars

！全面田間巡查！

- 巡查優先對象：新植田區。
- 巡查方式：每田區調查3-5行，每行皆須貫穿田區，目視觀察植株是否受害。

★幼蟲辨識重點★
體長0.2-3.2公分，每段體節上有4個黑點，呈梯形分布，近末節則呈矩形

田間觀察幼蟲直接取食為害樣態

找尋葉面卵塊 **巡查重點** **典型危害狀**

- 卵塊
 - 多產於葉面
 - 少數卵附有雌蛾鱗毛
- 初齡幼蟲造成窗格紋食痕
- 新展開葉有規則蛀孔
- 1-3齡幼蟲
 - 造成透明窗格食痕
 - 造成規則排列蛀孔
- 4-6齡幼蟲
 - 偏好取食生長點
 - 亦為害穗部及莖頂心葉
- 取食生長點，具大量蟲糞
- 危害雄花穗



5) Sustainable Development Goals and Results



SDG15 Life on Land

Protect, Restore and Promote Sustainable Use of Terrestrial Ecosystems, Sustainably Manage Forests, Combat Desertification, and Halt and Reverse Land Degradation and Halt Biodiversity Loss



Red imported fire ants prevention and lectures



Lychee giant stink bugs prevention lecture

5) Sustainable Development Goals and Results



Target 15.9

Integrate ecosystem and biodiversity values into national and local planning, development processes, poverty reduction strategies and accounts.

Promoting the Mainstreaming of Biodiversity Policies

Biodiversity is in a steep decline due to the human destruction of the environment from modern society, over-exploitation of land, and other various reasons. In order to maintain the balance of Yilan's biodiversity within the ecosystem, the county is actively promoting the mainstreaming of biodiversity policies so that even the public will be able to understand the importance of it. In the spring of 2021, 12 flagship events on environmental education were held at the Yilan Green Expo. The Yilan County Government invited lecturers and experts to share the importance of biodiversity in easy-to-understand and interactive content. The public was able to learn more about the interdependence between organisms and actually implement specific actions and practices in their daily life to help with environmental conservation. Through preserving the integrity of biodiversity, we will be able to live sustainably on Earth.

Around 600 people attended the 12 events, and in the future it is expected for at least 10 biodiversity promotion events to be held each year with over 300 participants each time.

Responsible Dep.	Indicator	2020	2030 Target
Agriculture	Achievement Rate of Promoting the Mainstreaming of Biodiversity	100%	100%

ula: Achievement Rate = (Seminars held/total seminars) * 100%.



Wildlife preservation education

5) Sustainable Development Goals and Results



SDG16 Peace, Justice, and Strong Institutions

Promote peaceful and inclusive societies for sustainable development, provide access to justice for all and build effective, accountable and inclusive institutions at all levels



In order to maintain social order and create an environment for citizens to work and live without worries, the Yilan County Government has a zero tolerance policy against crimes. The government is relentless in its efforts to fortify the social safety net, ensure social stability, maintain public order, and frequently check for unlawful behaviors to stop violent crimes. Police agencies are required to solve all reported violence cases to provide citizens with a safe living environment.

Target 16.1

Significantly reduce all forms of violence and related death rates on all fronts

Maintaining Social Order and Stopping Violent Crimes

In 2020, 31 violent crime cases were reported in Yilan, 4 up from the 27 cases in 2019 or amounting to a 1.3% increase. 14 cases were reported between January to September in 2021, 9 down from the 23 cases in the same period of 2020, or a 64.3% decrease. All violent crime cases were solved in the shortest period of time.

The county government has been fighting against crimes, illegal guns, and drugs. Crackdowns and DUI checkpoints have been arranged to increase police exposure and prevent violent crimes from happening. The government has required the police to solve all cases reported to maintain social order, and the preventional measures have been proven effective.

Responsible Dep.	Indicator	2020	2030 Target
Police	Number of violent crime cases	31	29

Formula: The number of violent crime cases in 2030 will be 4% lower from that in 2020.

5) Sustainable Development Goals and Results



Search and Seizure of Illegal Earnings Associated with Gangs

The Police Bureau has requested assistance from the Financial Supervisory Commission and the Anti-Money Laundering Division to investigate illegal earnings and assets from criminal organizations associated with gangs. Applications are then submitted to the court with supporting documents for seizure. Search and seizure for illegal earnings have been conducted to cut off financial supply to the gangs and ensure social security. To further prevent violent crimes and crack down on gangs, local police have been regularly checking special operation venues (such as nightclubs) to maintain social order and prevent crimes.

Premises associated with gangs that are considered detrimental to social orders are inspected frequently to cut off financial supply to gangs. In addition, the police have taken control of gangs situated in the county. Investigations about violent crimes trace back to the source, and crackdowns and inspections are conducted by the police at premises where criminal organizations operate their businesses. By cutting off the financial supply, the county government endeavors to disintegrate the criminal structure and demonstrate the police's determination to maintain social order.

Responsible Dep.	Indicator	2020	2030 Target
Police	Illegal earnings seized	NTD 1.643 M	NTD 3.286 M

Formula: Illegal earnings seized in 2030 will double that in 2020.

5) Sustainable Development Goals and Results



SDG17 Partnerships for the Goals

Strengthen the Means of Implementation and Revitalize the Global Partnership for Sustainable Development



Yilan International Children's Folklore & Folkgames Festival is the one and only art event featuring children themes in Asia that has been certified by UNESCO as an international folk art festival. Throughout more than 20 years since its inception, with cultural and artistic exchanges with numerous countries, the festival serves as the best stage for Yilan to connect with the international community and promote cultural diplomacy by inviting art performance groups from various countries every year to establish long-lasting friendship. In the future, the festival will continue to be held in expectation of developing stronger bonds with the rest of the world in terms of social and economic sustainability.

Target 17.17

Encourage and promote effective public, public-private and civil society partnerships, building on the experience and resourcing strategies of partnerships

Cultivating Friendships with the World via the Children's Folklore & Folkgames Festival

In 1994, Taiwan joined the International Council of Organizations of Folklore Festivals and Folk Arts (CIOFF) under the name of Chinese Taipei and officially became a member state. The Yilan International Children's Folklore & Folkgames Festival was first held in 1996 and became the only Asian art event featuring children's folk games that was certified by CIOFF as an international folk art festival. For more than 20 years, 383 groups from 98 countries have come to Yilan for cultural and artistic exchanges and established unique and lasting friendships with Yilan County in cooperation.

Yilan County will continue to organize activities for the Children's Folklore & Folkgames Festival and carry out the duty as a CIOFF member state to strengthen the relationship between Taiwan and other member states by striving for the opportunity to host a meeting or a congress of CIOFF in Yilan. In addition, close links with international organizations such as the International Art Festival Alliance (FIDF) and International Dance Council (CID) are actively maintained to expand the scope of international cooperation and exchanges.

Yilan County aims to have more than one hundred countries participating in its events and have a growth in the total number of international folk performance groups by at least 20% by 2030. The Yilan County Government will work together with other member states for the protection and inheritance of folk arts and cultures around the globe with a mindset of always being open to making friends with every country.

Responsible Dep.	Indicator	2020	2030 Target
Cultural Affairs	Number of invited countries (regions)	Cumulative participating countries (regions): 98	Cumulative participating countries (regions): 100+

5) Sustainable Development Goals and Results



Events of Yilan International Children's Folklore and Folkgame Festival in recent years



Photo by Kenji Lai



6

Striding Towards
the Future



6) Striding Towards the Future



OUTLINING YILAN'S SUSTAINABILITY BLUEPRINT

When imagining the future, the Yilan County Government envisions the residents of Yilan County and the native species wandering freely on this beautiful land of mountains and rivers—coexisting, prospering, and enjoying a happy life. In order to achieve this wonderful vision, the most important work of the county government team is developing proper policies and actions, with the determination to promote sustainable development policies across the board. Furthermore, by compiling the Yilan County SDGs local voluntary inspection report, the government will sort out the policy guidelines and design the policy goals to more closely match the needs of the people. In the future, the county will take action to implement and improve the sustainable blueprint of Yilan County.

ENGAGING IN SELF-INTROSPECTION

In 2021, the local voluntary inspection report assembled by various government agencies and units has been mainly for the purpose of self-disclosure. Each bureau has engaged in a review of policy actions to have a more precise understanding of the county's implementation status and problems facing sustainability. By delving into the root of sustainability issues, engaging in group brainstorming, and conducting research on how to overcome difficulties facing businesses, the Yilan County Government hopes to bolster self-improvement and thereby achieve the most efficient implementation results.

SOLIDIFYING SUSTAINABLE BEHAVIORS

The 2020 report prioritized the review of 7 goals based on environmental and ecological needs. In 2021, it will add 10 more goals ranging from environmental to social and economic concerns in an effort to reach the 17 development goals of the United Nations. In the future, the county will use the sustainable policies listed currently as its foundation and expand on them by not only continually thinking of how to improve on the model but also copying the successful practices of cities within the country and without. It will keep an open mind on how to improve on its vision so as to realize Yilan's sustainable future.

6) Striding Towards the Future



TRACKING OF SUSTAINABLE RESULTS

The goal of sustainable development is not something that can be achieved overnight. The final goal can only be achieved through the accumulation of many positive behaviors, policy revisions, and rolling adjustments. Yilan County has currently set out a comprehensive list of corresponding action plans for the 17 goals and will use data indicators as the basis for tracking results. In the future, it will simultaneously pay attention to the trend of sustainable development, and continue to improve learning through unscheduled reviews to achieve the ideal sustainable results of the county.

MOTIVATING CITIZENS TO BECOME MORE INVOLVED

To promote the sustainable development of cities, in addition to the efforts of government agencies, the participation of local citizens is also vital. The county government team will strengthen dialogue with the members of society and collect public opinions as a reference for sustainable decision-making.

The 17 SDGs adopted by the UN have been designed with good intentions in mind, but they have yet to become popular among the general public. Therefore, local voluntary inspection reports will be used as a vehicle of mobilization, and the SDGs will be promoted and conveyed through activities such as promotional films and exhibitions so that the goals can be implemented in society. The aim is to encourage individuals to adopt sustainable practices and take it upon themselves to fulfill their responsibilities, understand how global and domestic issues are related to themselves, and achieve the goal of Yilan County's sustainable development together.



Outlining Yilan County's sustainability blueprint and holding forums on SDGs

Publisher:

Yilan County Government

Executed by:

Civil Affairs Department, Transportation Department,
Economic Affairs Department, Education Department,
Agriculture Department, Land Administration Department,
Labor Affairs Department, Social Affairs Department,
Personnel Department, Police Bureau, Public Health Bureau,
Fire Bureau, Cultural Affairs Bureau, Business and Tourism Department,
Water Resources Department, and Environmental Protection Bureau

Editor:

Planning Department, Yilan County Government

Consultant:

Elmo Hsu, Deputy Executive Manager, Lan-Yang Agricultural Development Foundation
Zhenyu Yeh, Project Manager, Foundation of Taiwan Industry Service

Art Designer and Post Editor:

CommonWealth Magazine

Date of Publication:

Date of Publication: November 2021

